

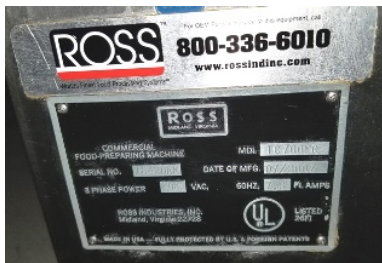


Photos are one of the most important factors when selling equipment. Our guidelines will enhance the sale of your surplus equipment.

Take Multiple Photos



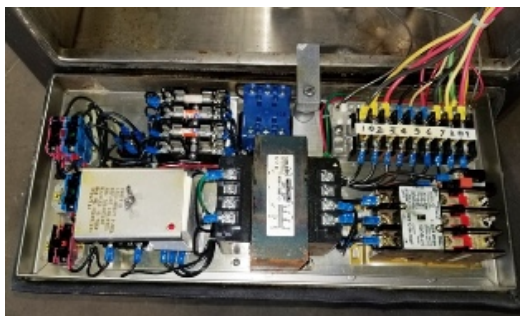
Front



Tag



Side



Controls



Accuracy

Photo Checklist

- All four sides
- Inside electrical panel
- Manufacturer's tag
- Key operating areas
- Inside of any compartments or tunnels
- Specs and Features
- Additional tooling, such as molds or dies
- Listings with 8+ photos sell faster than those with fewer photos.

Image Quality

- An expensive camera is not necessary. A smartphone camera is fine.
- Keep vertical and horizontal lines as straight as possible.
- If the photo is not in focus, retake the photo. Blurry photos are often the result of poor lighting. More light should improve focus.
- Don't include too much space around the equipment, and don't get so close you cut out the edges of the equipment.