

# Formax® shuttle technology maximizes line productivity

# STS®

Increase line productivity and ensure exact product placement with Formax®'s servo-driven STS® Shuttle Transfer System.

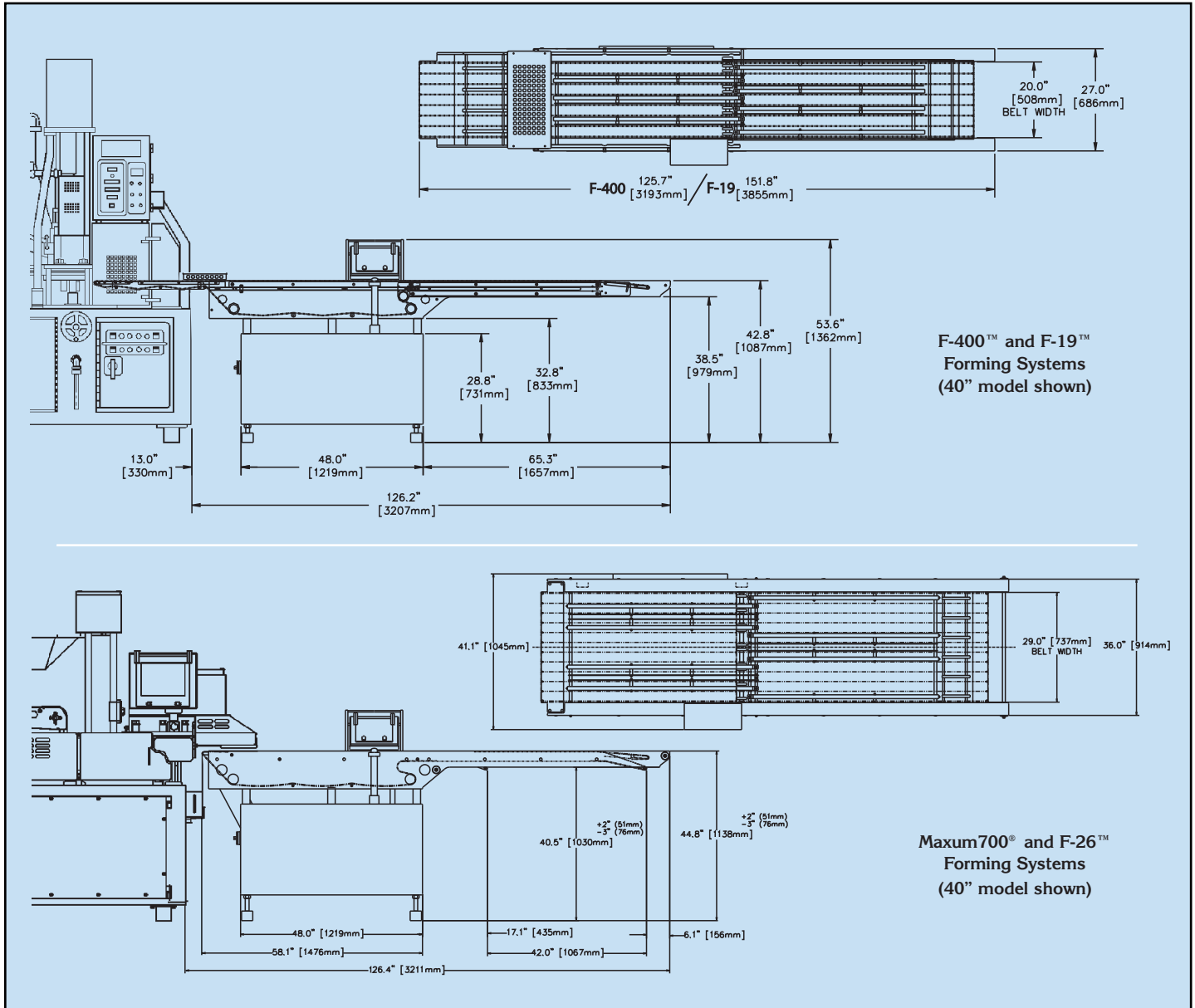
Automatically load any size conveyor up to 48" wide with the Formax® STS®. Programmed product codes entered through the touch pad control panel ensure smooth, consistent and precise product placement onto the downstream conveyor. The servo drives ensure that proper product spacing is maintained, optimizing product flow and maximizing productivity.

The Formax® STS® is available for the Maxum700®, Ultra26®, F26-Y™ Hybrid, F-19™ and F-400™ forming systems. Specifications are available upon request.



**FORMAX**  
There's more in it for you.

[www.formaxinc.com](http://www.formaxinc.com)



## Features and Specifications

- Servo drive control synchronized with the Formax® forming system for precise product placement
- Matches forming system output for maximum line productivity
- Programmed product codes for consistent and repeatable performance
- Shuttle distance adjustable through the control panel up to a 48" (1220mm) length - 40" and 48" models available (other sizes available upon request)
- Touch pad control for easy machine operation
- Stainless steel construction
- 230 volts, 50/60 Hz, single phase, 3.5 KVA
- Controls mount right or left side
- Worldwide 24/7 customer service support

**FORMAX®**  
There's more in it for you.

Provisur® Technologies, Inc.

USA: 9150 191st Street, Mokena, IL 60448 (near Chicago) 708-479-3500 [fax 708-479-3598]  
The Netherlands: Schipholweg 315, 1171 PL Badhoevedorp (near Amsterdam) (+31) 20-6590801  
Email: formaxinfo@provisur.com www.formaxinc.com ©2011 Provisur® Technologies, Inc. FM1204