

TENDERIZERS



Model TC700M, Model TC700MC



TC700MC



**Bone-In or Boneless,
Ross Guarantees Tenderness!
*We "Steak" Our Word on it!***

ROSS® TENDERIZERS

Processing and Packaging Your Needs

Since 1968, **Ross Tenderizers** have enabled processors to produce and upgrade meat cuts with **guaranteed tenderization**. Stainless steel blades produce 32 incisions per square inch (unique "T-shape" pattern) in **bone-in** and **boneless** meat products to sever sinew, connective tissue, and muscle fiber.

PROCESSOR BENEFITS

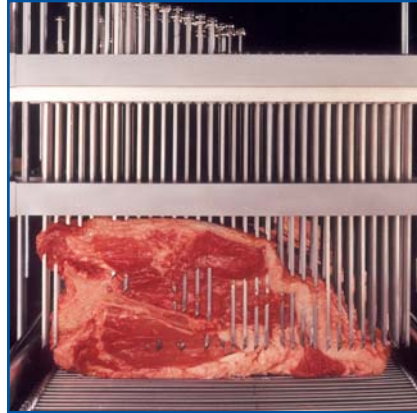
- Aging time is reduced, decreasing purge.
- Cooking time is reduced, and moisture is retained to enhance flavor.

KEY FEATURES

- **Magnetic Head Design:** Tenderizer blades are positioned in magnetic carriers, retracting when they encounter bones or frozen areas.
- **Hi/Lo Product Height Adjustment:** Allows processor to adjust tenderizer head clearance for tenderizing all primals, bone-in or boneless.

Compact model is ideal for small volume processors.

Product Applications: Beef, Poultry, Pork, Lamb, Seafood



(Bone-In or Boneless Product!)



The ROSS
Advantage
Is...
**GUARANTEED
TENDER MEAT!**

| SPECIFICATIONS | MODEL | TC700M (Full Size) | TC700MC (Compact) |
|----------------|-------------------------|--|---|
| | Machine Dimensions | 72" L x 24" W x 40" H* (183 cm x 61 cm x 101 cm) | 52" L x 24" W x 40" H* (132 cm x 61 cm x 101 cm) |
| | Approval/Certification | USDA (CE Compliant Model Available) | USDA |
| | Voltage Requirements | 200-575V • 50/60Hz • 17-6.5A | 200-575V • 50/60Hz • 7-3.3A |
| | Nominal Production Rate | 5,000 lbs/hr (2,272 kg/hr) | 3,000 lbs/hr (1,364 kg/hr) |
| | Conveyor Speed | 5.5 ft/min (1.7m/min) | 3.3 ft/min (1.7m/min) |
| | Maximum Product Height | LO Position = 7" (17 cm) HI Position = 9" (22 cm) | |
| | Conveyor Width | 12" (30.5 cm) | |
| | Product Temperature(s) | 32°F to 40°F (0°C to 5°C) | |

*Conveyor Height



Ross Industries, Inc.
5321 Midland Road
Midland, VA 22728

Phone: 540-439-3271 • Fax: 540-439-2740
www.rossindinc.com • E-mail: sales@rossindinc.com

Represented by: