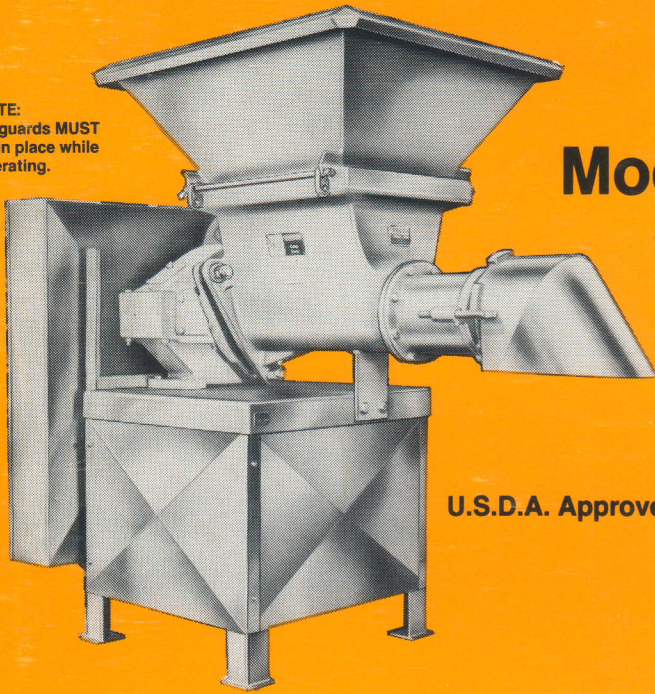


WEILER®

Model 1109 MEAT GRINDER

11 inch (279.4mm) Plate Diameter
50 to 100 Horsepower

NOTE:
All guards MUST
be in place while
operating.



U.S.D.A. Approved

PRODUCTION RATINGS:

12,000 to over 72,000 pounds (5443 to 32,659 Kg) per hour for pre-grinding.

12,000 to over 22,000 pounds (5443 to 9979 Kg) per hour for finish grinding.

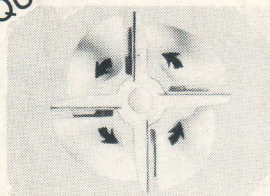
Feed hopper will accept thawed and tempered meat chunks weighing up to approximately 50 pounds.

NOTE: Actual production ratings will depend on type of product, product temperatures and reduction sizes.

Standard Features:

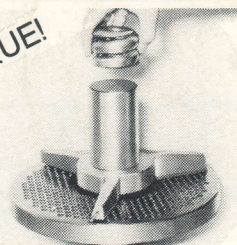
1. Three-point suspension of hopper provides greater strength and easier clean-up.
2. Spring loaded knifeholder with self-seating and self-sharpening inserts. Provides cooler cutting, minimum temperature rise and improved product quality.
3. Knifeholders are rotated by drive lugs that are built into the feed screw which eliminates centering pin breakage. The recessed knives become an extension to the contour of the feed screw pressure flight and creates less interference with product flow.
4. Feed screws that are designed for fresh, frozen and tempered meats. Cupped flighting for more efficiency.
5. All steel construction. Tin-plated (hot-dipped) steel U.S.D.A. Approved. Also available in stainless steel.
6. Reversible cutting plates.
7. Replaceable plate center bushing.
8. Bridged plate retaining rings for greater strength.
9. Available with Double Plate Assembly (DPA) and/or Bone Collecting Assembly (BCA).

UNIQUE!

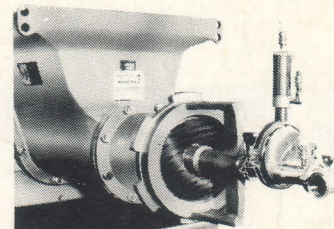


Recessed Knife Drive Lugs

UNIQUE!



Spring Loaded Knifeholders



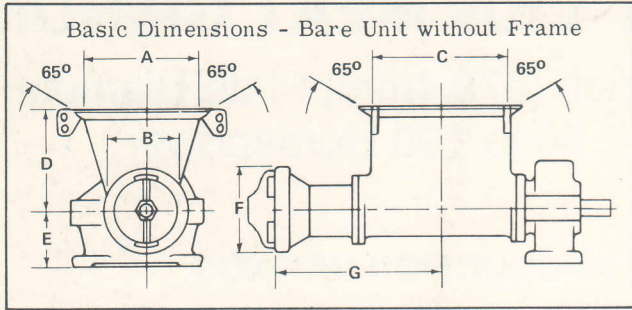
Bone Collecting Assembly (BCA)

WEILER® & Company Inc.
1116 E. Main Street
Whitewater, Wisconsin 53190

414/473-5254 800/558-9507
TELEX: 265442
TELEFAX: 414/473-5867

BASIC DIMENSIONS*

inches
(centimeters)



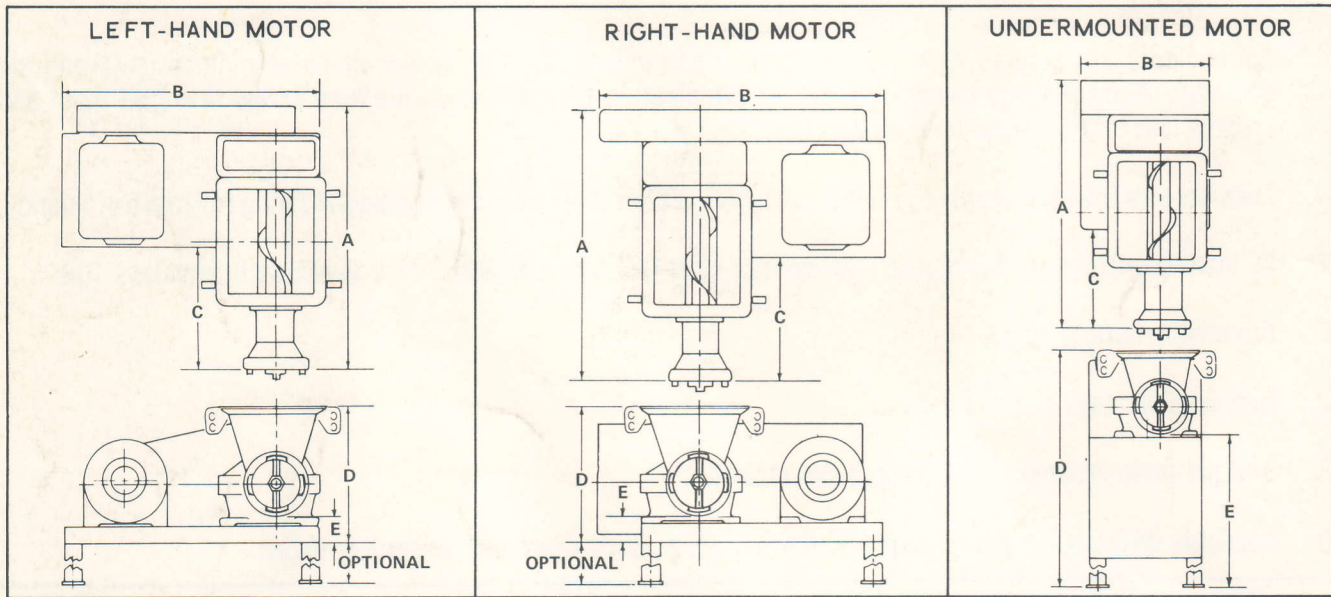
*Because of many options and customized features, dimensions and shipping weights may differ from those described. Shipping weights do not include drive motors. Dimensions should not be used for installation purposes unless certified.

GRINDER MODEL	GEARBOX MODEL	A	B	C	D	E	F	G	SHIPPING WEIGHT (lbs.)
1109B	1398-5HB or 1992-5HB	26-3/16 (66.5)	13-1/2 (34.3)	26-3/8 (67.0)	18-3/4 (47.6)	11-3/16 (28.4)	14 (35.5)	32-7/16 (82.4)	2020

Note: Dimension "D" is minimum standard height on all frames.

Dimension "E" is minimum clearance under discharge.

All grinder frames can be constructed as needed. Specify height and/or clearance desired.



MOTOR FRAME	GRINDER MODEL	GEARBOX MODEL	A	B	C	D	E	SHIPPING WEIGHT (lbs.)
LEFT-HAND MOTOR	1109B	1398-5HB or 1992-5HB	75-11/16 (192.2)	70-7/16 (178.9)	25-5/8 (65.0)	33-15/16 (86.2)	7-3/16 (18.2)	2700
RIGHT-HAND MOTOR	1109B	1398-5HB or 1992-5HB	75-11/16 (192.2)	75-7/16 (191.6)	25-5/8 (65.0)	33-15/16 (86.2)	7-3/16 (18.2)	2700
UNDER-MOUNTED MOTOR	1109B	1398-5HB or 1992-5HB	75-11/16 (192.2)	42 (106.7)	29-9/16 (75.0)	66-15/16 (170.0)	40-3/16 (102.1)	2850