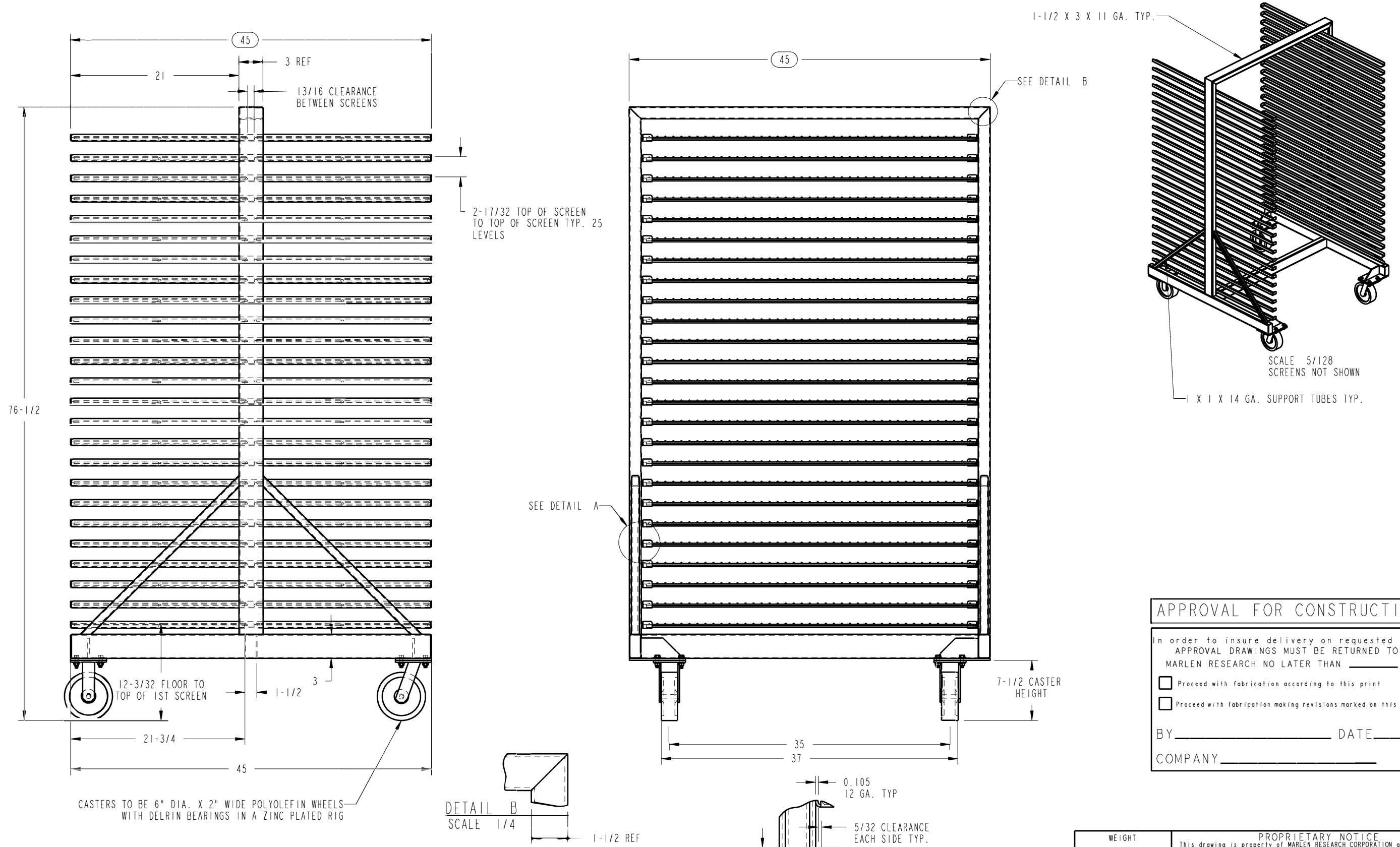


NAME: CHENDRICKSON OBJECT: FT596626\_APR DATE: 27-Sep-04 07:16:32



**APPROVAL FOR CONSTRUCTION**

In order to insure delivery on requested date, APPROVAL DRAWINGS MUST BE RETURNED TO MARLEN RESEARCH NO LATER THAN \_\_\_\_\_


Proceed with fabrication according to this print  
 Proceed with fabrication making revisions marked on this print

BY \_\_\_\_\_ DATE \_\_\_\_\_  
 COMPANY \_\_\_\_\_

DETAIL B  
SCALE 1/4

DETAIL A  
SCALE 1/4

NOTE:  
 -ALL WELDS TO BE CONTINUOUS AND SANITARY;  
 -RACK TO BE OF 304 S/S CONSTRUCTION;  
 -DEBURR ALL SHARP EDGES;  
 -GLASS BEAD RACK BEFORE INSTALLATION OF AXLES AND WHEELS;

WEIGHT 868 lbs.		PROPRIETARY NOTICE This drawing is property of MARLEN RESEARCH CORPORATION and shall not be reproduced, copied, lent, or disposed of for any other purpose than for which it is specifically furnished and must be returned upon demand.	
TOLERANCES UNLESS OTHERWISE SPECIFIED 0/0 = ±1/16 0.00 = ±0.01 0.0000 = ±0.0005 < = ±0.5		TRUCK, NESTAWAY 25 LEVEL 304 SS	
DRAWN BY CURTIS H		 <b>MARLEN RESEARCH CORPORATION</b> HUTCHINSON, KANSAS	
DATE 8/4/04			
APPROVED EDG		DATE 8/5/04	
SCALE 53/640		DRAWING NO.	
PROJECT #		REV. C	

C	35 WAS 33	CJH	8/4/04
B	ROTATED CASTERS, LENGTHENED CASTER PLATES	CJH	7/29/04
A	MOVED CASTERS IN TOWARD CENTER ADDED SUP. TUBES	CJH	7/13/04
REV	CHANGE	DRN	DATE