

URSCHEL® MODEL CC

VERSATILE SLICER, SHREDDER, & GRANULATOR



(optional stainless steel motor shown)

Food processors rely on the Urschel #Model CC (MCC) to produce precise, uniform slices, strips cuts, shreds, and granules at high production capabilities with excellent results. Products processed on the Model CC include: potatoes for chips, shredded cheese, mushrooms, cabbage, lettuce, other vegetables/fruits, nut reductions for bakery ingredients, and pet food ingredients. The Model CC features continuous operation for uninterrupted production and is designed for easy cleanup and maintenance. The Model CC will accept products measuring up to 4" (101.6 mm) in any dimension. NEW MicroAdjustable® Slicing Head increases capacity with 14 cutting stations, and offers tool-free knife changeovers to greatly reduce time and effort during switching-over of heads. Contact Urschel to learn more.

TYPES OF CUTS



NEW!

14-STATION, MICROADJUSTABLE SLICING HEAD (SL-14)

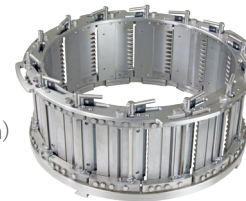
1 FLAT SLICES

Two Flat Adjustable Slicing Heads are currently available. Optimal, precision slice thickness ranges: .060 – .080" (1.5 – 2.0 mm) & .040 – .060" (1.0 – 1.5 mm)
Fully-extended range of slice thickness: .050 – .083" (1.3 – 2.1 mm) & .030 – .063" (.76 – 1.6 mm)

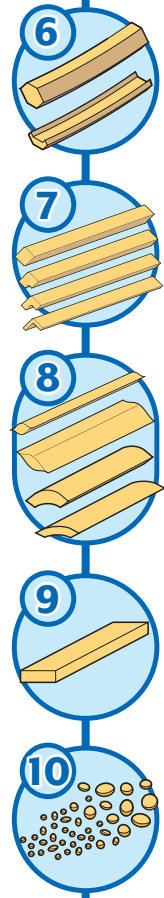
2 .125 V SLICE

Optimal, precision slice thickness range: .055 – .075" (1.4 – 1.91 mm)
Fully-extended slice thickness range: .045 – .078" (1.14 – 1.98 mm)

Note: The optimal slice thickness range is designed to produce the best cut quality. Cut quality may be affected if the extended slice thickness range is used.



ADDITIONAL SHAPES AND SHREDS IN THIS NEW STYLE HEAD COMING SOON!



STANDARD, 8-STATION, FULLY-ADJUSTABLE HEAD

1 FLAT SLICES

Slice thickness up to .500" (12.7 mm)

2 V SLICES

Slice thickness up to .500" (12.7 mm)

.125" Slice: 8 "V"s per inch. "V" depth of .050" (1.3 mm); Centers: .125" (3.2 mm).

.212" Slice: 4.7 "V"s per inch. "V" depth of .084" (2.1 mm); Centers: .212" (5.4 mm).

3 CRINKLE SLICES

Slice thickness up to .500" (12.7 mm) with 3-1/2 waves per inch.

.175" Slice: Crinkle Depth .084" (2.1 mm), Centers .175" (4.4 mm),

.300" Slice: Crinkle Depth .080" (2.0 mm), Centers .300" (7.6 mm).

.480" Slice: Crinkle Depth .076" (1.9 mm), Centers .480" (12.2 mm).

4 FLAT-V® SLICES

Slice thickness up to .180" (4.6 mm) with 2.1 corrugations per inch. Corrugation depth of .125" (3.2 mm); Centers: .473" (12 mm).

5 **Z-CUT SLICES

Slice thickness up to .325" (8.3 mm) with 2.1 corrugations per inch. Corrugation depth of .135" (3.4 mm); Centers: .394" (10 mm).

6 FULL & REDUCED FLAT-V® SHREDS

Full Flat-V Shred: Hexagonal-shaped cross section approximately .150" (3.8 mm) on all sides.

Reduced Flat-V Shred: Flattened top and bottom that form a corrugated shred.

7 FULL SHREDS & REDUCED V SHREDS

Full Shred: Diamond-shaped cross section available in four thicknesses: .070, .097, .125, or *.285" (1.8, 2.5, 3.2, or *.72 mm).

Reduced V Shred: "V"-shaped cross section

*Limited availability based on customer application. Contact your local Urschel office to verify salability.
**The Z-Cut is only available in non-European countries.

8 OVAL & REDUCED OVAL (CRESCENT) SHREDS

.250" Oval Shred: Oval-shaped cross section approximately .125" (3.2 mm) thick by .250" (6.4 mm) wide.

.480" Wide Oval Shred: .152" (3.7 mm) thick by .480" (12.2 mm) wide.

Crescent Shred: Crescent-shaped cross section.

Wide Crescent Shred: Wide crescent-shaped cross section.

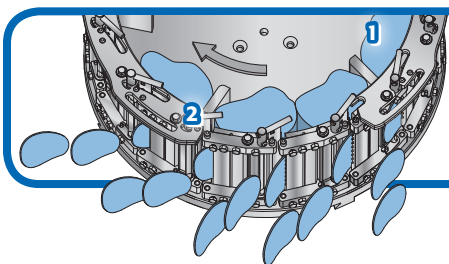
9 STRIP CUTS

Rectangular cross section.

Width: 3/32, 1/8, 3/16, 1/4, 3/8, 1/2, 9/16, or 3/4" (2.4, 3.2, 4.8, 6.4, 9.5, 12.7, 14.3, or 19 mm)

10 UNIQUE SLICES AND GRATING OPTIONS

Contact your local Urschel office to explore more types of cuts. Urschel continuously works to develop and discover additional cutting options.



CUTTING OVERVIEW

1. Impeller Paddle
2. Slicing Knife

If your product application is not mentioned on this page, contact your local Urschel representative to determine the most effective solution to your size reduction needs.

URSCHEL® MODEL CC

Measurements and weights may vary depending on machine configuration.

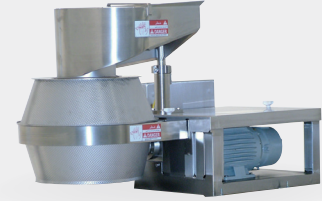
Length:..... 48.03" (1220 mm) - 2 or 5 HP
 51.74" (1314 mm) - 10 HP

Net Weight: .. 550 lb (250 kg) - 2 or 5 HP
 680 lb (310 kg) - 10 HP

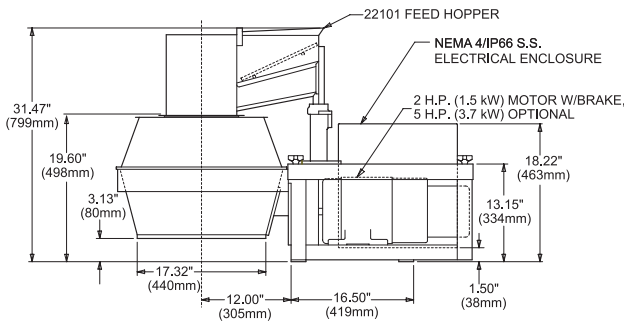
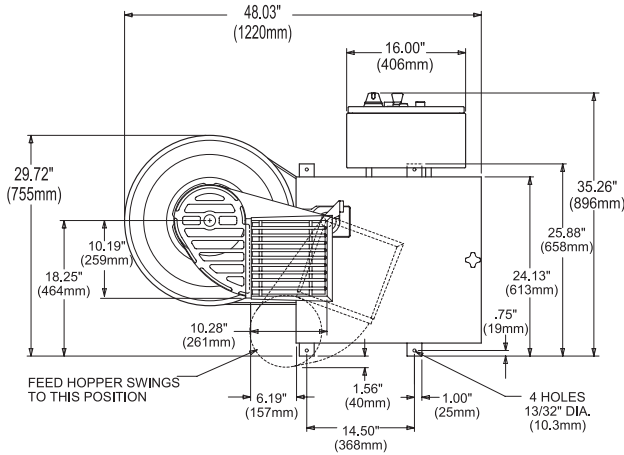
Width:..... 35.26" (896 mm)

Motor:..... 2, 5, or 10 HP (1.5, 3.7, or 7.5 kW)

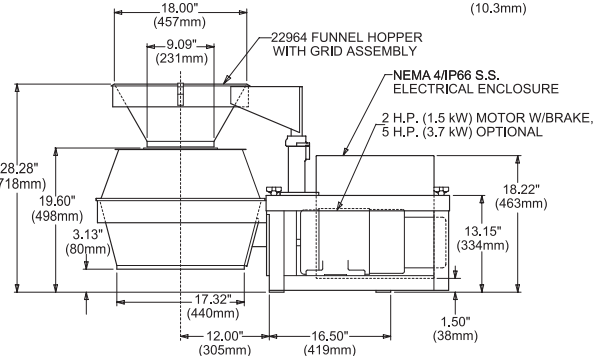
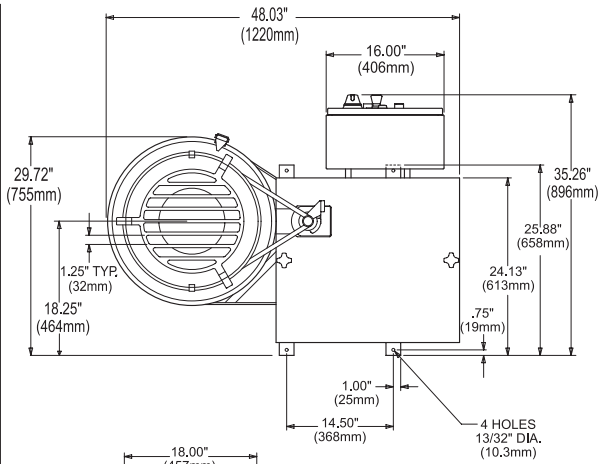
Height:..... 31.47" (799 mm) - 2 or 5 HP
 30.28" (769 mm) - 10 HP



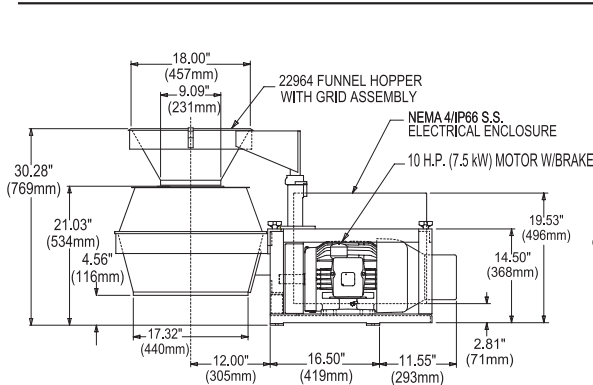
SPECIFICATIONS & DIMENSIONS



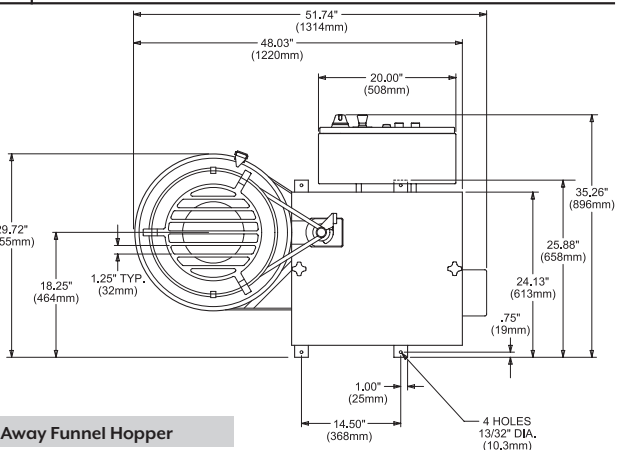
2 HP/5 HP with Swing Away Hopper



2 HP/5 HP with Swing Away Funnel Hopper



10 HP with Swing Away Funnel Hopper



TEST CUT YOUR PRODUCT

Contact your local Urschel representative to schedule a comprehensive, no-obligation test-cut of your product: www.urschel.com.



URSCHEL®

The Global Leader in Food Cutting Technology

www.urschel.com | info@urschel.com