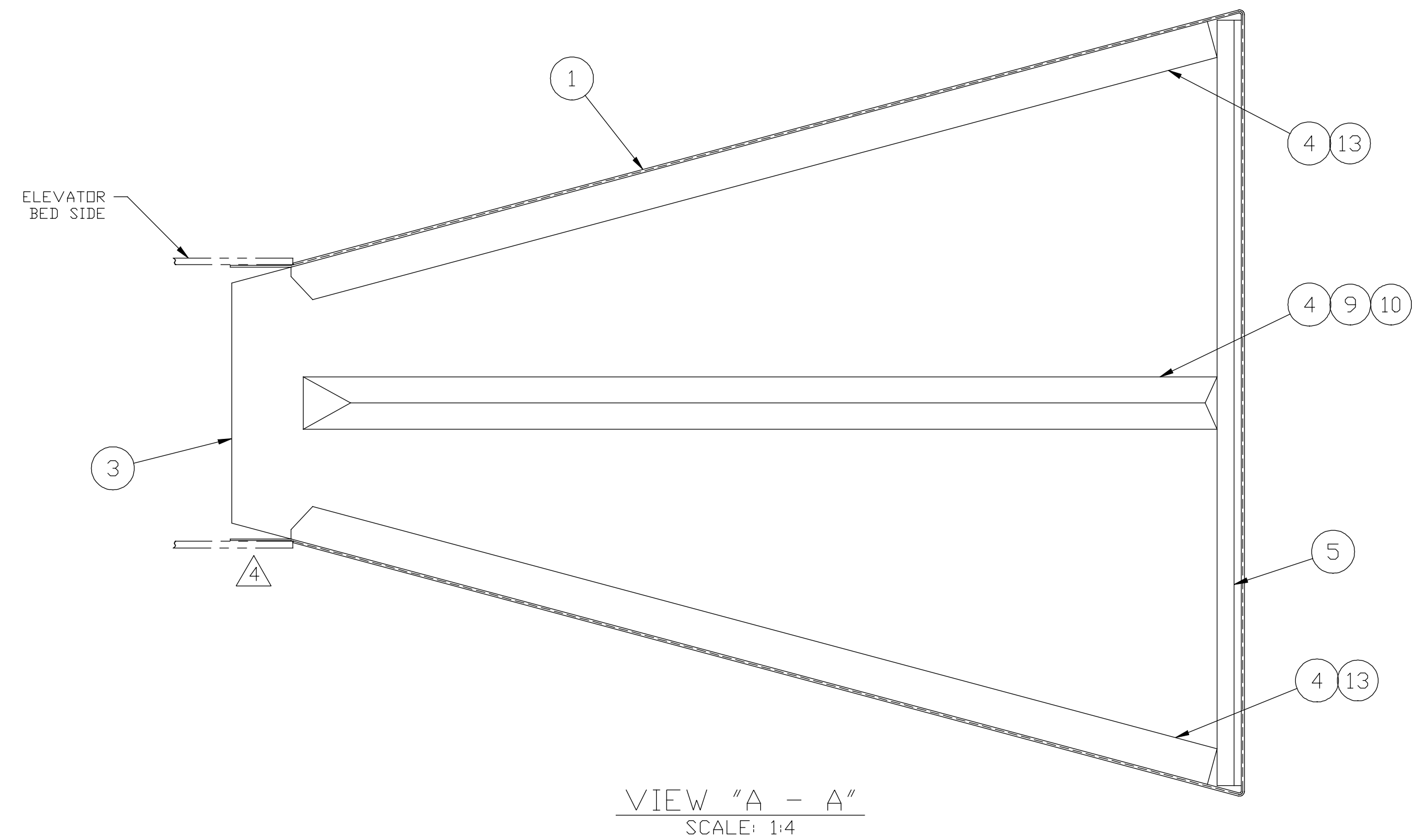
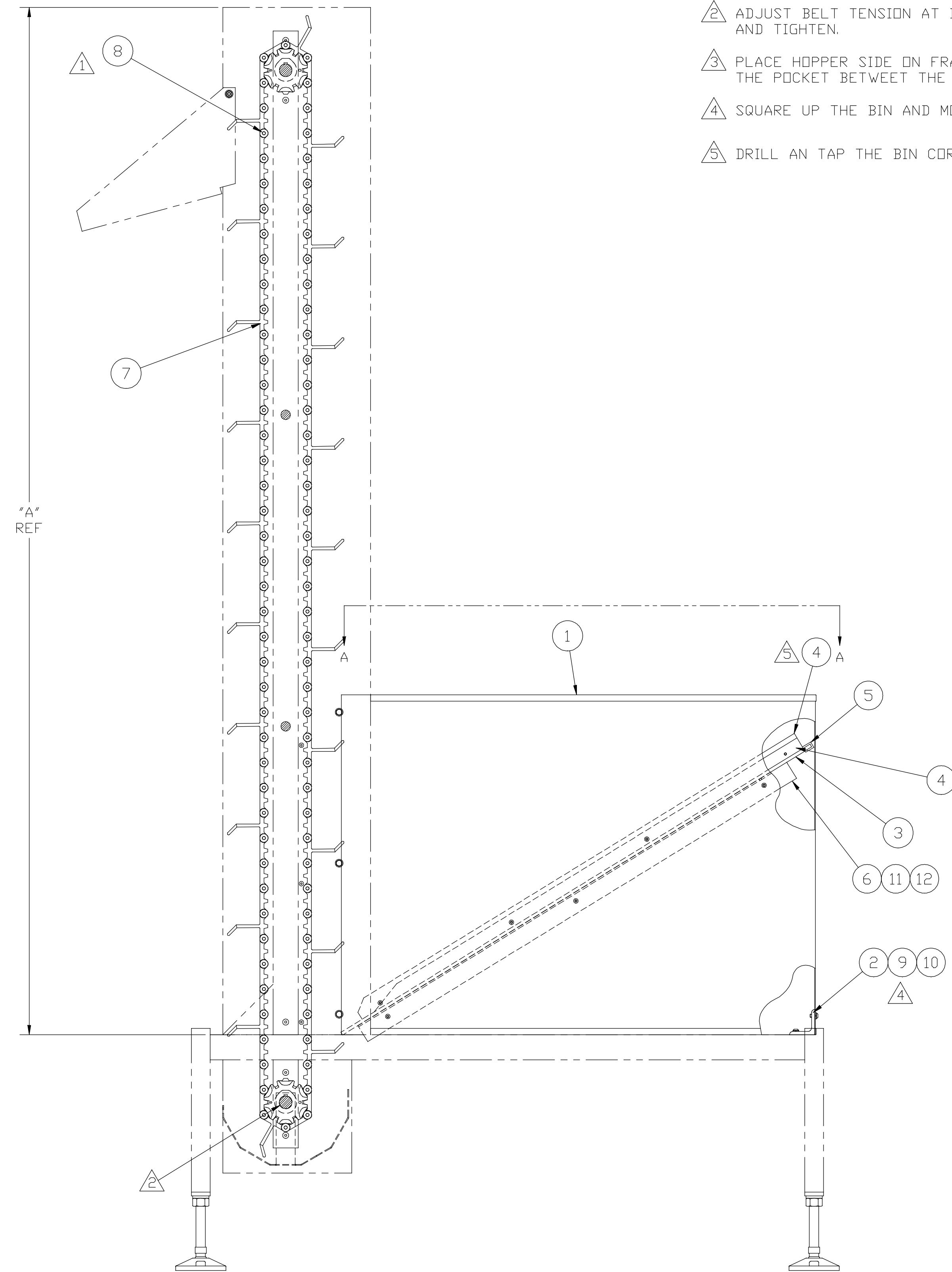


ASSEMBLY NOTES:

- ⚠ POSITION BELT, ALIGN AND TIGHTEN SPROCKETS & COLLARS. INSERT LACING PIN THRU HOLES PROVIDED IN BED SIDES.
- ⚠ ADJUST BELT TENSION AT IDLER SHAFT AND TIGHTEN.
- ⚠ PLACE HOPPER SIDE ON FRAME AND SLIDE THE TWO FLANGES IN TO THE POCKET BETWEEN THE FILL STRIPS AND THE SIDE PANEL.
- ⚠ SQUARE UP THE BIN AND MOUNT IT USING THE MOUNTING ANGLE.
- ⚠ DRILL AN TAP THE BIN CORNERS #10-24 WITHOUT DRILLING THRU.



ITEM	QTY	PART NO	MAT'L	TAB	DESCRIPTION
13	8	-	COML		#10-24 BUTTON HEAD 3/4 LG
12	8	-	COML		#10 LOCK WASHER
11	6	-	COML		#10-32 BUTTON HD 3/8 LG
10	8	-	COML		1/4 LOCK WASHER
9	8	-	COML		1/4-20 SH CAP SCREW X 3/4 LG
8	REF	216005	COML		BELT LACING PIN
7	176'	C62400	POLYPROP		BENT FLIGHT INTRALOX BELTING
6	2	D69271	ALUM		HOPPER BOTTOM MOUNTING ANGLE
5	1	330001	ALUM		1/2 X 3/4 X 1/8 CHANNEL X 28.00 LG
4	3	B69258	UHMW		HOPPER BIN CORNER
3	1	C69254	HDPE		HOPPER BIN BOTTOM
2	2	B69272	ALUM		REAR HOPPER BIN MOUNTING ANGLE
1	1	D69232	STSTL		HOPPER BIN SIDE

TOLERANCES UNLESS OTHERWISE NOTED		OMEGA DESIGN CORP	
MACHINING	.XX ± .01 .XXX ± .005	SCALE 1:6	DRAWN BY CRL APP'D BY DATE 02/04/14
ANGULAR	X° ± 0°-30' X°-XX' ± 0°-05'	TITLE	HOPPER BIN & ELEV BELT ASSY
SHEET METAL FINISH	.XX ± .03 ✓ 125	REFERENCE	ORDER NO DWG NO D69279

01	65.63	144"
00	81.63	176"
TAB	DIM "A"	QTY ITEM# 6