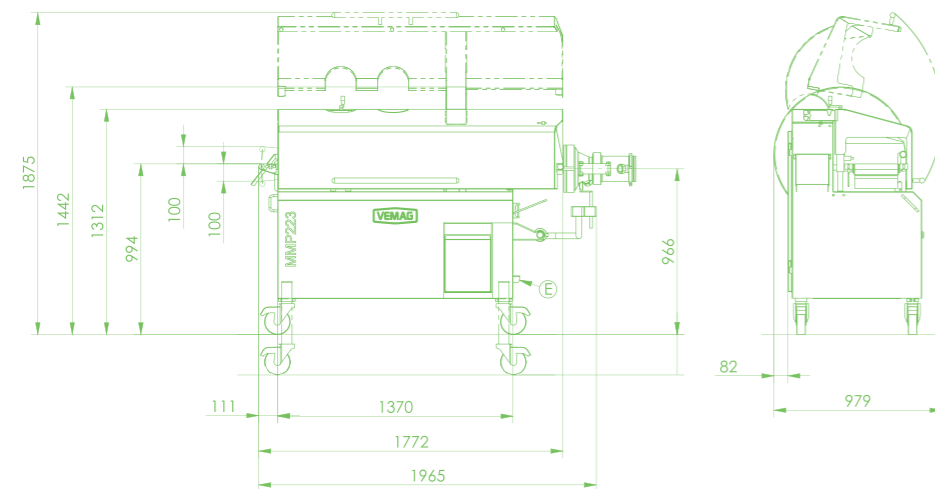


# TECHNICAL SPECIFICATIONS

## Minced Meat Portioner MMP223

<b>Can be combined with the following fillers</b>	HP series	<b>Portioning rate</b>	up to 200 portions/min. (depending on portion weight and subsequent processing)
<b>Power consumption</b>	4A at 400-460 V	<b>Portion weight</b>	100 - 3.000 g
<b>Paper roll core diameter</b>	Ø 25 - 77 mm (3")	<b>Portion width</b>	max. 240 mm
<b>Paper type</b>	paper layer, rolled goods	<b>Portion height</b>	max. 100 mm
<b>Paper width</b>	240 mm	<b>Portion length</b>	unlimited



Technical Drawing | A = Air connection | E = Electrical connection | W = Water connection



For further information  
visit [www.vemag.com](http://www.vemag.com)



VEMAG Maschinenbau GmbH  
Weserstr. 32 | 27283 Verden  
Germany | [www.vemag.com](http://www.vemag.com)



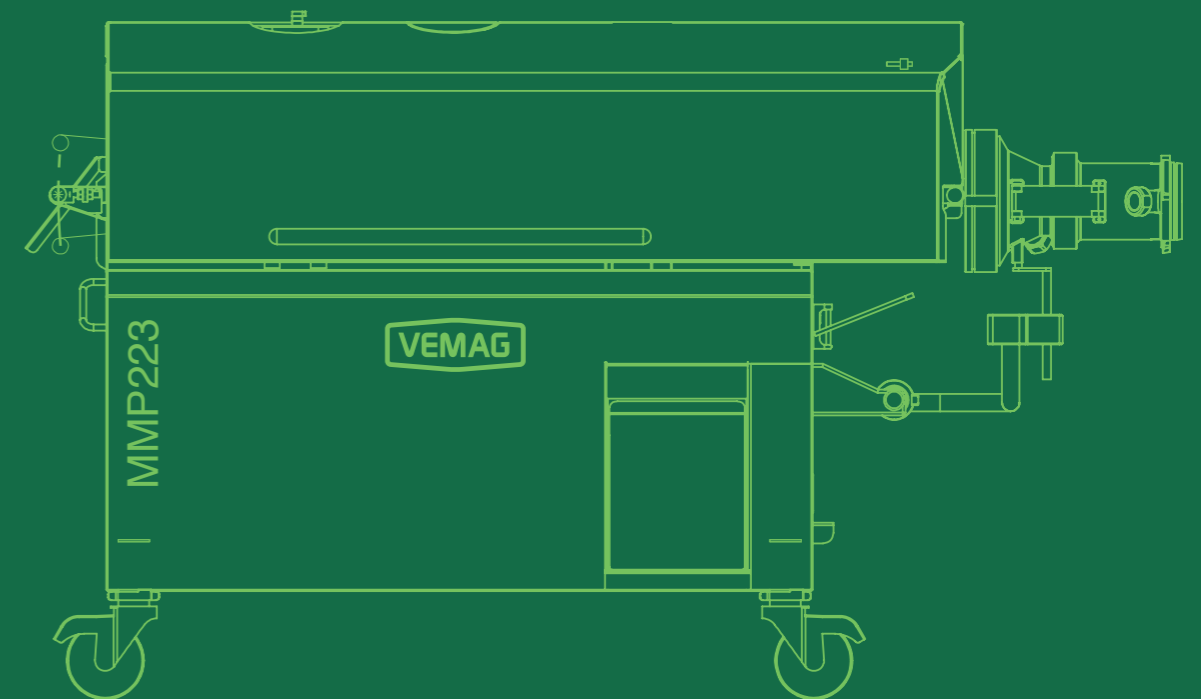
© VEMAG 2020 – Subject to technical amendments. 08/2020



# MMP223

## Minced Meat Portioner

### DATA SHEET



# MAXIMUM PERFORMANCE FOR DEMANDING PRODUCERS

Highest outputs combined with perfect forming

The Minced Meat Portioner **MMP223** offers an enormous output capacity making it the perfect solution for industrial processors. The **MMP223** portions minced meat at maximum speed. The attachment has been developed for a productive and continuous operation ensuring outstanding weight accuracy and

minimum giveaway. The Minced Meat Portioner is suited for minced meat production of beef, pork and poultry. Plant-based products can easily be produced as well.

## BENEFITS AT A GLANCE

- Highest portioning capacity
- Continuous operation for high outputs and gentle handling of raw materials (without start-/stop-function)
- Perfect product appearance
- Maximum weight accuracy
- Reliable reduction of giveaway
- Minimum residual product volume
- Quick and easy cleaning
- Perfect integration into the VEMAG grinding system
- Can be expanded to a fully automatic production line



HPE–SeparationGrinder982–Separator813–MMP223

## OUTSTANDING TECHNOLOGY

### The Principle

- Automatic forming of a continuous product flow which is placed onto a conveyor belt (paper layer) and carried to the blade
- The adjustable and servo-driven blade rotates at high speed and cuts the continuous product flow into separate portions
- Blade drive unit and controller never get in touch with product
- The product always maintains its loose structure and is constantly separated at identical intervals even at high portioning rates and compact dimensions

- The continuous filling mode of the vacuum filler guarantees an extremely gentle handling of the product
- Maximum use of frozen raw materials
- The enormous range of hole plates with various patterns ensure that the protective gas can penetrate the portions during the packaging process
- Easy integration into VEMAG loading systems

### Your Benefit

- Precisely separated portions
- Maximum weight accuracy and minimum giveaway
- Precise cutting guarantees outstanding product appearance
- Protection of the drive systems: longevity and security for your investment

Double Screw



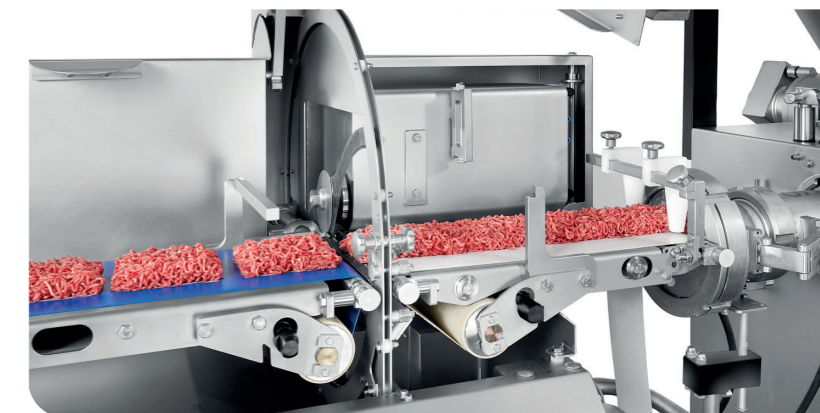
Display



Separation Blade with Concave Cut



Exact Portioning and Precise Discharging of the Portions



## OPERATION

### The Principle

- Just one operator is needed to control this fully automatic line
- Portion weight and portioning speed can be adjusted separately
- The desired product shape can be chosen individually thanks to the inserted nozzle

### Your Benefit

- Process optimization through reduced labor cost
- Intuitively operated display
- Product shapes can be adjusted flexibly by interchangeable inserted nozzles
- Easy operation with various types of trays and tray sizes
- Quick and easy cleaning with low-pressure equipment