

# NITRO-SHIELD - JE-U4 940 IM/VSD/UP

## DRAWING APPROVAL

THIS DRAWING OUTLINES THE SPECIFICATIONS TO MEET YOUR REQUIREMENTS BASED ON THE INFORMATION PROVIDED TO THE ENGINEERING GROUP. IF YOU FIND THAT ANY OF THE INFORMATION IS INCORRECT PLEASE MARK THE DRAWING AND RETURN IT WITHIN 30 BUSINESS DAYS. IF WE DO NOT HEAR FROM YOU WITHIN THAT TIME FRAME WE WILL ASSUME THAT THE INFORMATION IS CORRECT AND WILL PROCEED WITH THE PROJECT ON THAT BASIS.

IF THERE ARE ANY QUESTIONS CONCERNING THE DESIGN, PLEASE CONTACT LINDE'S MICHAEL REED AT 1-330-263-9425.

IF THE DESIGN IS ACCEPTABLE, PLEASE SEND THE SIGNED/APPROVED COPY TO:

LINDE  
 ENGINEERING  
 2600 LINCOLN WAY EAST, SUITE A  
 HOUSTON, OHIO 44691  
 ATTN: MICHAEL REED

(SIGNATURE) (DATE) (TITLE)

## TUNNEL SPECIFICATIONS

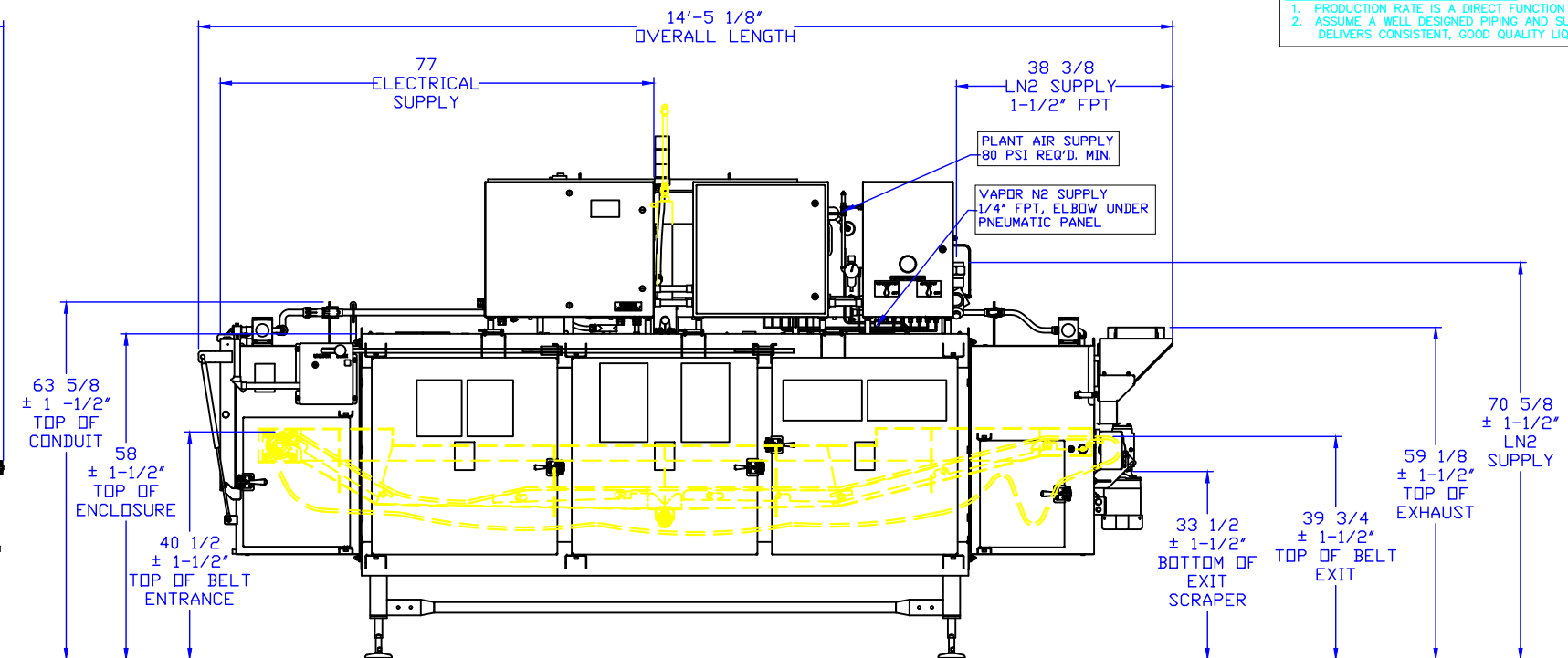
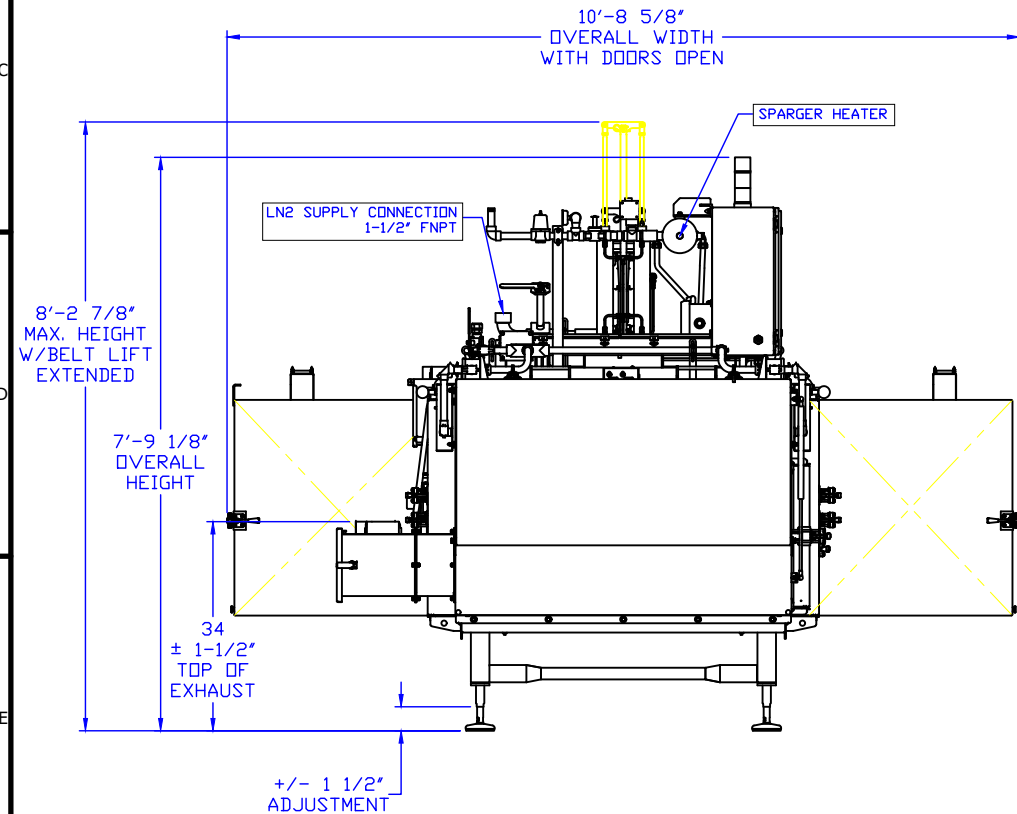
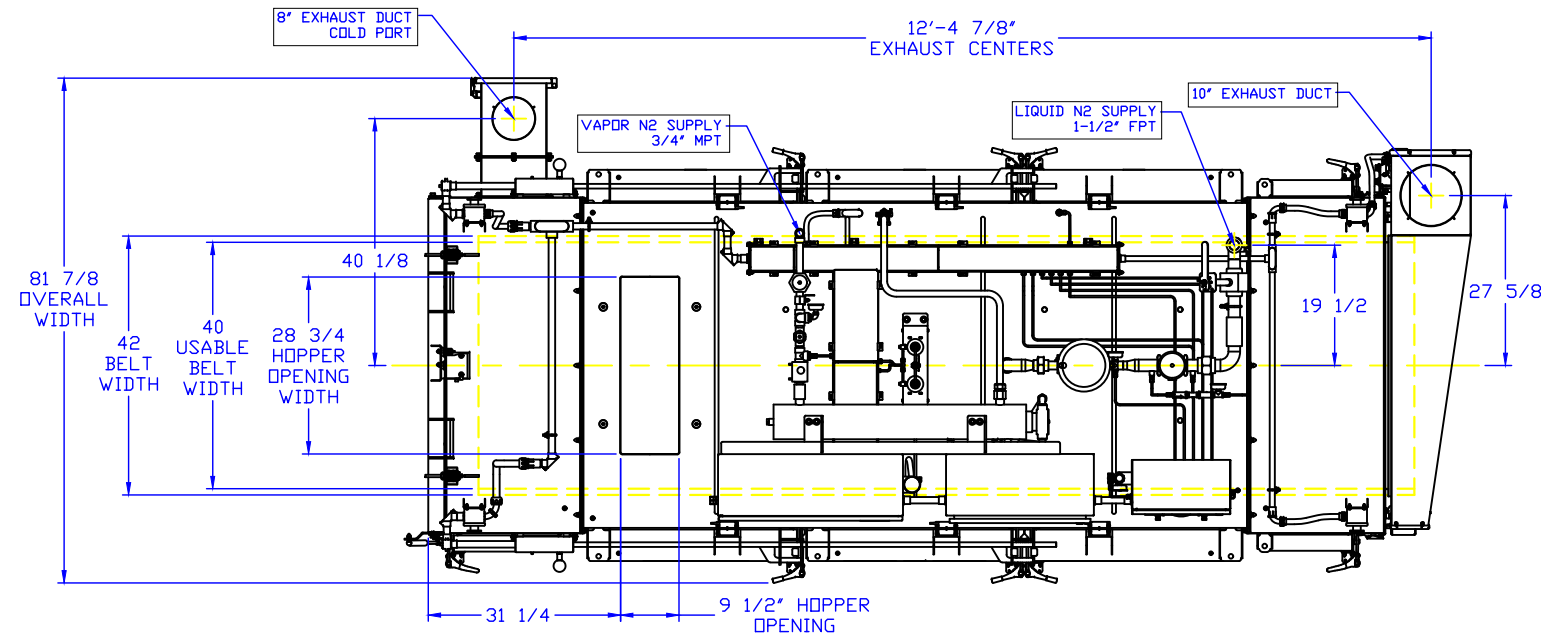
FREEZER TYPE.....JE-U4 940 IM/VSD/UP  
 BELT WIDTH.....42" ACTUAL WIDTH /40" USEABLE WIDTH  
 BELT TYPE.....3/4" PITCH, HEAVY DUTY SIDE LINKS, B84-32-16 MESH OVERLAY, NO FILLER RODS.  
 BELT LENGTH.....23'-0" Lg. TOTAL  
 DRIVE TYPE.....1 HP W/WINSMITH, VARIABLE SPEED AC  
 VOLTAGE.....480 VAC  
 FULL LOAD AMPS.....30.0 AMPS  
 UNIT WEIGHT.....4,000 LBS. (Approx.)  
 NORMAL OPERATING PRESS.....10-12 PSI  
 CONTROL VALVE.....1" VALVE w/9.5 Cv TRIM  
 IMMERSION LENGTH.....51-1/4" @ 1" BATH DEPTH (MIN.)  
 .....55-1/2" @ 1-1/2" BATH DEPTH  
 .....59-5/8" @ 2" BATH DEPTH  
 .....67-3/8" @ 3" BATH DEPTH (MAX.)  
 FREEZER DWELL RANGE.....6.2 SEC TO 30.8 SEC.  
 BELT SPEED RANGE.....15.6 FPM TO 77.9 FPM

## PRODUCT SPECIFICATIONS

PRODUCT.....PET FOOD, RAW PELLETS, BEEF & FILLER  
 PRODUCT DIMENSION.....0.45" DIA. x 1" L  
 PRODUCT WEIGHT.....1.5 gm (approx.)  
 ESTIMATED PRODUCTION RATE.....1290 LBS/HR 585 kgs/hr  
 INSTANTANEOUS RATED EXCEEDING THE VALUE SHOWN WILL RESULT IN WARMER PRODUCT  
 PRODUCT DWELL TIME.....0.25 MINUTES (15 seconds)  
 PRODUCT BELT SPEED.....32 FPM  
 BELT LOADING.....0.29 LBS/SQ FT  
 LOADING DESCRIPTION.....6 GROUPINGS OF 4 PELLETS ACROSS  
 TEMPERATURE IN.....35F 1.7C  
 TEMPERATURE OUT.....5F -15.0C  
 TOTAL HEAT REMOVED.....100 Btu/lb 55.6 Kcal/kg  
 BTU/lb INTO LATENT.....95  
 H/T CURVE.....6.6485  
 H/D CURVE.....7.7107

## SPECIAL COMMENTS

1. PRODUCTION RATE IS A DIRECT FUNCTION OF BELT LOADING.
2. ASSUME A WELL DESIGNED PIPING AND SUPPLY SYSTEM THAT DELIVERS CONSISTENT, GOOD QUALITY LIQUID LN2.



PRODUCT FLOW →



 Linde, Inc. <small>This document is confidential and is protected by copyright law. Any use, any making of photocopies or other reproductions, any distribution or communication to third parties, in whole or in part, is strictly prohibited without written permission of Linde.</small> <b>IMMERSION, 940 IM/VSD/UP</b> LN2	CREATED BY: Douglas B. Imhoff	MATERIAL: -
	REVIEWED BY / DATE - 1 -	FINISH: -
	APPROVED BY / DATE - 1 -	REFERENCE: 90250
	TOLERANCE, UNLESS NOTED OTHERWISE: DECIMAL = ± .1, ± .01, ± .005 FRACTIONS = ± 1/32, ANGLES = ± 1/2° ALL RIGHT ANGLE BENDS = 90° MACHINED SURFACES = 125μ	SCALE: UNITS = INCHES DO NOT SCALE
REVISION HISTORY	DRAWING NUMBER: 90250-Texas	