

SMOKE PRODUCER



Owner's Manual



Effective Serial 2000+

320610 • Revision A • 11/13/2022

**EQUIPMENT AND SUPPLIES
FOR THE MEAT AND FOOD INDUSTRY**

TABLE OF CONTENTS

General	III
SAFETY	
Personal Safety	1.1
Warnings	1.2
Safety Decal Locations	1.3
STARTUP	
Installation	2.1
Connection to Grand Prize™ 3 Smokehouse	2.1
Liquid Smoke Option	2.1
Smoke Producer Setup	2.2
OPERATION	
Smoke Producer Operation	3.1
Smoke Producer Cycle Timer	3.2
MAINTENANCE	
Prior to Cleaning	4.1
Maintenance	4.1
Frequency	4.1
Maintenance Log	4.2
Service Log	4.2
SCHEMATICS	
Microprocessor Producer Control	5.1
Standard Producer GP3 No Blower	5.2
Standard Producer GP11 w/Blower	5.3
PARTS	
Recommended Spare Parts	6.1
Micro Conversion Kit	6.1
Smoke Producer	6.1
Hopper/Frame	6.2
Electrical	6.4
Decals	6.6
Electrical Box	6.8

Smoke Producer

Congratulations on your Smoke Producer purchase. The smoke producer was designed to give you years of trouble-free operation and to help in the processing and preparation of your quality meat, poultry, fish, and other products.

Please read this owner's manual to gain the maximum benefits of your smoke producer and its different components.

A note about cleaning: Given all the various ways equipment is used in different environments, we recommend the owner consult sanitation experts on how to properly clean each piece of machinery in their plant and to do bacterial testing to insure that the equipment is cleaned properly.

For Sales, Call:

Phone 816.753.2150 • Fax 816.753.4976
Toll-Free 800.777.5624

For Replacement Parts, Call:

Phone 816.753.2150 • Fax 816.561.2854
Toll-Free 800.777.5624

For Technical Support, Call:

Phone 816.753.2150 • Fax 816.753.4976
Toll-Free 800.777.5624

General

This owner's manual contains information pertinent to your Smoke Producer. Basic instructions and maintenance information is provided. Please read carefully. Failure to do so could result in bodily injury and/or damage to the equipment.

Receiving Problems: As in all cases, before signing the bill of lading, be sure all items have been received as listed and there is no damage in shipment. If needed, a claim must be made immediately to the local truck line office and noted on the bill of lading.

Please fill in the information from the bill of lading and the product identification tag.

Model No. _____

Serial No. _____

Ship Date: _____

Owner: _____

Location: _____

We ask that you contact UltraSource Service with any questions that you may have on the operation of the smoke producer. Contact UltraSource Parts Department for genuine UltraSource replacement parts.

THIS PAGE LEFT BLANK INTENTIONALLY.

SAFETY

Personal Safety

The procedures and guidelines herein must be followed precisely to avoid problems that can result in property damage, personal injury, or death. If you have any questions related to this information, please contact UltraSource Service at 800.777.5624.

⚠ DANGER HAZARDOUS VOLTAGE.

Disconnect power before servicing machine or cleaning. Do not remove any panel/covers unless power has been disconnected at risk of electric shock hazards.

⚠ WARNING

Read and understand owner's manual before using this machine. Failure to follow operating instructions could result in personal injury or damage to equipment.

⚠ WARNING

This equipment is supplied by two sources of power. Contact may cause electric shock or burn. Disconnect two power cords before servicing.

⚠ WARNING

HOT SURFACE. DO NOT TOUCH.

Exterior surfaces of the Smoke Producer become hot during use. Operator should avoid touching the exterior surfaces without proper heat resistant gloves.

⚠ DANGER

ROTATING PARTS INSIDE. KEEP HANDS CLEAR.

Smoke producer has moving parts inside, keep hands clear at all times while the smoke producer is in operation. Always exercise proper lockout/tagout procedures prior to servicing the smoke producer.

Signal words used in classification of potential hazards are defined as follows:

DANGER: Indicates an imminently hazardous situation, which, if not avoided, may result in death or serious injury.

WARNING: Indicates a potentially hazardous situation, which, if not avoided, could result in death or serious injury.

CAUTION: Indicates a potentially hazardous situation, which, if not avoided, may result in minor or moderate injury. Caution also indicates actions that may cause property damage.

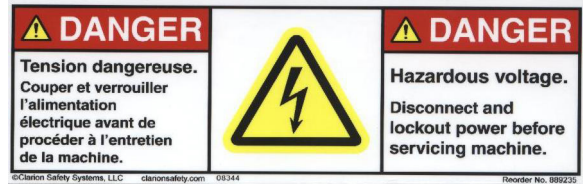
Warnings

- A certified electrician and/or plumber must perform the initial installation and startup of the smoke producer. Failure to do so may result in death or serious injury and/or permanent damage to the machine.
- The smoke producer must be installed with a minimum of 12-in. of horizontal clearance from any part of the cabinet or walls. It is the owner's responsibility to insure that the smoke producer installation conforms to all local, state, and national codes and regulations.
- For safe operation, the smoke producer must be kept clean. A thorough weekly cleaning schedule is recommended with a basic daily cleaning procedure. Check the duct work and natural smoke pipe for tar and creosote buildup on a regular and frequent basis. Failure to keep the unit clean and free of grease, tar, and creosote build-up exposes the customer to potential severe fire hazards. See the MAINTENANCE section for additional details on cleaning your smoke producer.
- Remove the ashes daily.

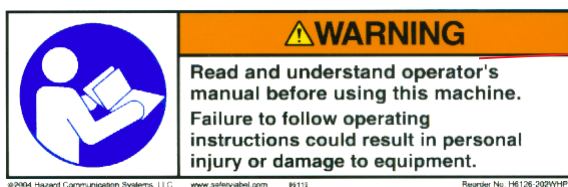
Safety Decal Locations



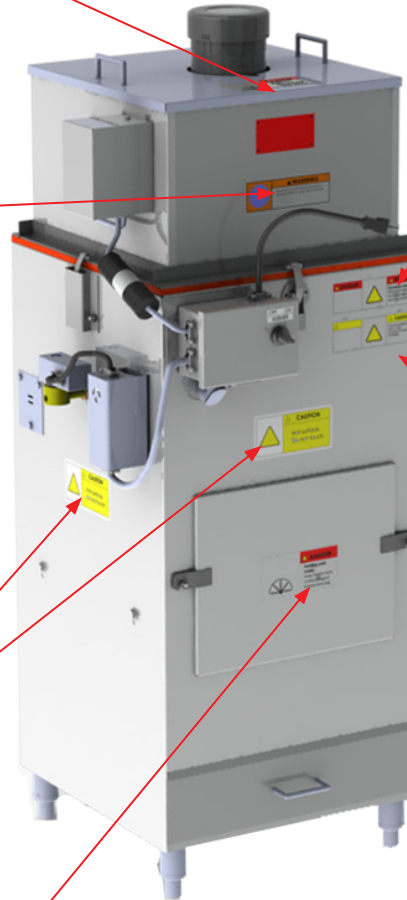
Part # 800231 (Qty. 1)



Part # 889235 (Qty. 1)



Part # 860988 (Qty. 1)



Part # 800663 (Qty. 1)



Part # 889599 (Qty. 3)



Part # 800231 (Qty. 1)

THIS PAGE LEFT BLANK INTENTIONALLY.

STARTUP

Installation

The smoke producer must be installed with a minimum 12-in. clearance, from combustible and non-combustible, surrounding the cabinet and must be placed on a non-combustible type flooring. It is the owner's responsibility to insure that the smoke producer installation conforms to all local and state, or in the absence of local codes, with National Fuel Gas Code, ANSI Z223.1/NFPA 54, or the National Gas and Propane Installation Code, CSA B149.1, as applicable. Take time to **properly level** your smoke producer after it is put in place. This will aid in proper operation and help minimize undue stress in the structure during operations.

Connection to Grand Prize™ 3 Smokehouse

The Grand Prize™ 3 Smokehouse is supplied with pipe to make the connection between the smokehouse and the smoke producer. Pipe couplings are provided to join these segments together.

If you have any questions or concerns regarding installation please contact UltraSource Service at 800.777.5624.

Connection to Other Smokehouses

Connections to smokehouses other than the Grand Prize™ 3 are acceptable. Unique connection hardware may need to be obtained. For assistance with these installations please consult UltraSource Service at 800.777.5624.

Smoke Producer Setup

1. Place the smoke producer in position on the control side of the Grand Prize™ 3 Smokehouse. Connect the smoke inlet pipes between the producer and the smokehouse after both units have been leveled.
2. Connect a cold water supply line (¼-in. copper) to the fire safety solenoid valve on the side of the smoke producer.
3. Connect power cord(s) provided with smoke producer to AC receptacle (120-volt, 20 amps).
4. If smokehouse is equipped with a CookMaster™ microprocessor control, connect control wires provided with unit to the smoke producer as shown in SCHEMATICS, in Section 5. of this manual.
5. The smoke producer is equipped with a cycle timer that operates the auger drive motor intermittently. The timer is preset at the factory for approximately 20% on and 80% off (refer to OPERATION, page 3.1). This percentage can be adjusted to increase or decrease smoke production. See timer instructions in the Operation section of this manual.
6. **The safety switch is factory set – do not adjust.**

NOTE: Grand Prize™ II Unit's Only

1. The small blower mounted on the side of the smoke producer has an air inlet cover plate. This **cover plate must be opened approximately half way** when the producer is in operation. If the cover plate is kept closed, there will be a poor circulation of smoke within the cabinet, and there will be excessive leakage around the seams of the smoke producer itself.

OPERATION

Smoke Producer Operation

1. Load the hopper with sawdust. UltraSource strongly recommends using 1/8-in. Cube Cut sawdust (also referred to as Coarse/Type B sawdust).
2. Push the slide mechanism (on the side of the machine) in to block chips from dropping on the burner plate. Turn the burner switch to the 'ON' position.
3. After burner plate is fully heated (approximately ten minutes), pull the slide out to the desired position to allow chips to fall from the hopper onto the burner plate at the desired rate.
4. Smoke production begins. If not, check to see if scraper blade is turning on top of the burner plate.
5. The burner plate and scraper blade can be adjusted up or down. Be sure that the blade is not jammed tightly against the burner plate. If sawdust "flare-up" becomes a problem, adjust the plate or blade to allow a 1/8-in. to 1/4-in. gap between the plate and blade. This allows the sawdust to remain on the hot burner plate longer and burn completely, prior to being scraped off into the ash tray below.
6. Screening of sawdust prior to loading the hopper is strongly recommended. The use of wood chips or strips of wood is not recommended, as they tend to clog the auger feeder.
7. **Remove the ashes daily.**
8. The hopper section should be removed for cleaning at the end of each day. The slide mechanism must be pulled out away from the hopper prior to removing the hopper. Failure to pull the slide mechanism out will result in damage to the slide mechanism. Use a wire brush to clean the burner plate. This is important for optimal operation.

Smoke Producer Cycle Timer

Timer has been factory preset. You should not need to make any adjustments!

See schematics for wiring

TO ADJUST TIMER: Turn the dial to the desired % of auger run time.

The device works as follows:

Turning the control to 100% will run the auger 100% of each minute.
(run auger 60 seconds and off 0 seconds)

Turning the control to 50% will run the auger 50% of each minute.
(run auger 30 seconds and off 30 seconds)

Turning the control to 25% will run the auger 25% of each minute.
(run auger 15 seconds and off 45 seconds)



On/Off Percent Timer,
UltraSource Part #:
350533

MAINTENANCE

Prior to Cleaning

Every environment and application is different; therefore, UltraSource LLC cannot provide cleaning instructions to guarantee microbiological sanitation. UltraSource requests that the owner of this machine consult sanitation experts to review the unit working in their particular environment to develop a robust cleaning schedule and methodology, followed by bacterial testing to ensure satisfactory cleaning procedures are followed.

A thorough preventive maintenance program is an owner's best protection against the risk of personal injury and unexpected downtime. The natural by-products of cooking and smoking (tar, grease, creosote, etc.) are combustible. Any buildup of these materials poses a severe fire hazard. To reduce the risk of fire, the smoke producer should be thoroughly inspected after each use and completely cleaned once a week. Inspection and cleaning should include, but is not limited to, all duct work, natural smoke pipe, and exhaust flue of the smokehouse. Failure to properly clean and maintain the smokehouse could result in contamination of the product and buildup of combustible materials resulting in the risk of bodily injury or death. **KEEP IT CLEAN TO MINIMIZE THE RISK OF FIRE AND CONTAMINATION.**

Maintenance

UltraSource recommends that a schedule be setup to check all moving parts for wear and/or misalignment on a monthly basis.

Frequency

The natural smoke producer should be at the least cleaned as frequently as the smokehouse and more frequently in some cases (including the smoke pipe).

Cleaning frequency and intensity depends upon a number of factors including frequency of usage, desired sanitation level, type of cleaner, and cleaner concentration. For normal operation, a thorough weekly cleaning is recommended with a basic daily cleanup procedure and inspection following each use. The smoke producer may require additional, more frequent cleaning depending upon individual use.

Initial cleaning of the smoke producer should be performed after 30 hours of smokehouse operation. Then check the effectiveness inside the supply ducts. If any traces of tar, etc. are detected, the concentration or application time of the cleaner should be increased or a cleaner specifically designed for tar removal should be used. In some cases, manual cleaning with a stiff bristled brush is required.

Remove the ashes daily.

The type of cleaner used must be compatible with Type 304 stainless steel and silicone rubber gasket and seals.

Maintenance Log

A maintenance log is a journal of all maintenance performed. Each entry includes a date, maintenance performed (details about the type of work done), and technician (who performed the maintenance). The maintenance log is also a place where a schedule is kept for further maintenance.

A maintenance log will clearly show daily inspections, gasket replacement, and so on. A master copy has been provided on page 4.3. Please create a copy and store in the back of this owner's manual.

Service Log

A service log is a journal of all service work performed. Each entry includes a date, service provided (details about the type of service), and technician (who performed the service).

A service log will clearly show training provided, frequent wear items, and so on. A master copy has been provided on page 4.4. Please create a copy and store in the back of this owner's manual.



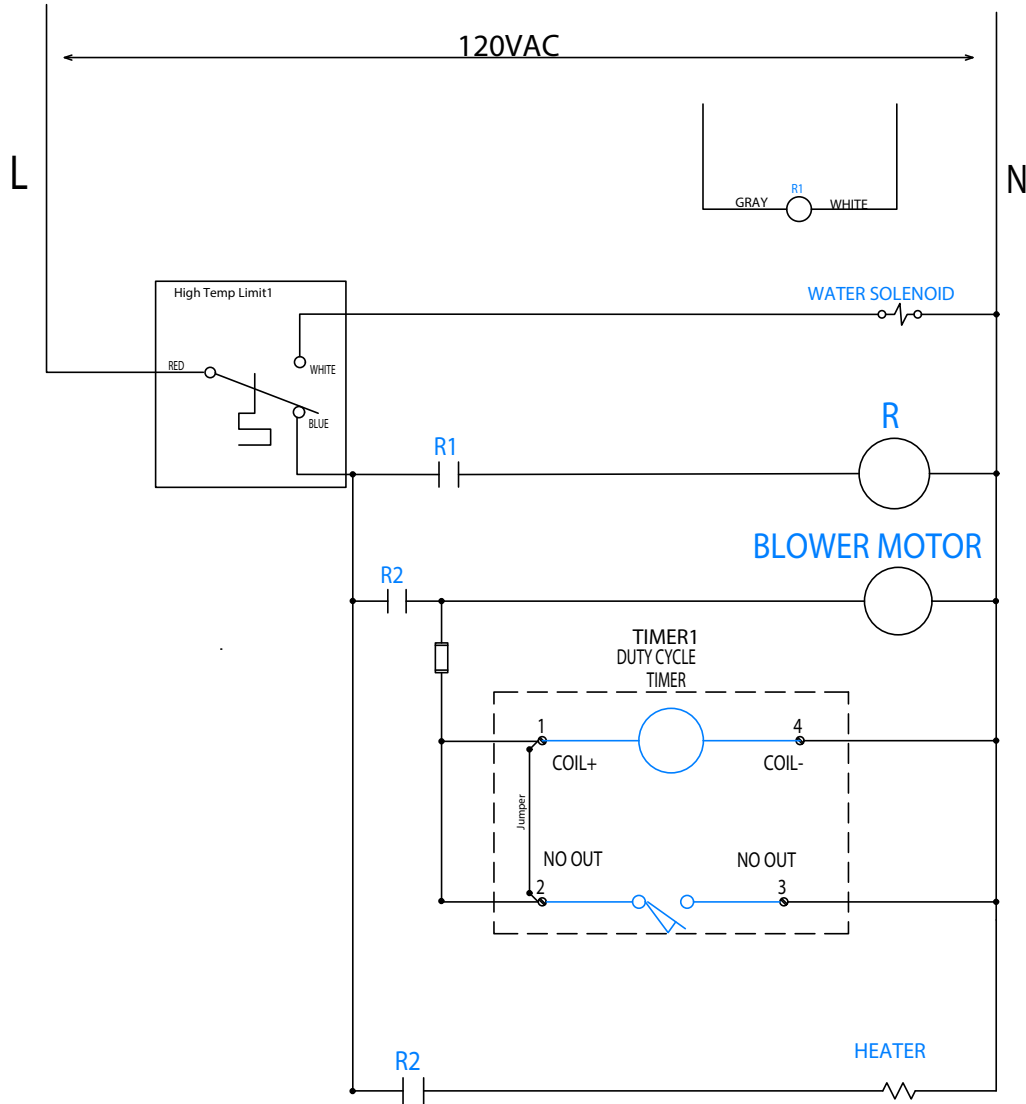
MAINTENANCE

[illegible]

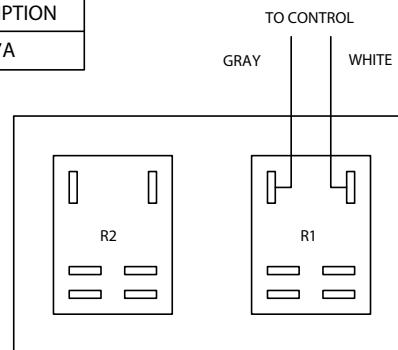
SCHEMATICS

Microprocessor Smoke Producer Control

SMOKE PRODUCER FOR GRAND PRIZE 3 WITH COOKMASTER CONTROL



ITEM	P/N	DESCRIPTION
F6	800152	FUSE, 7A

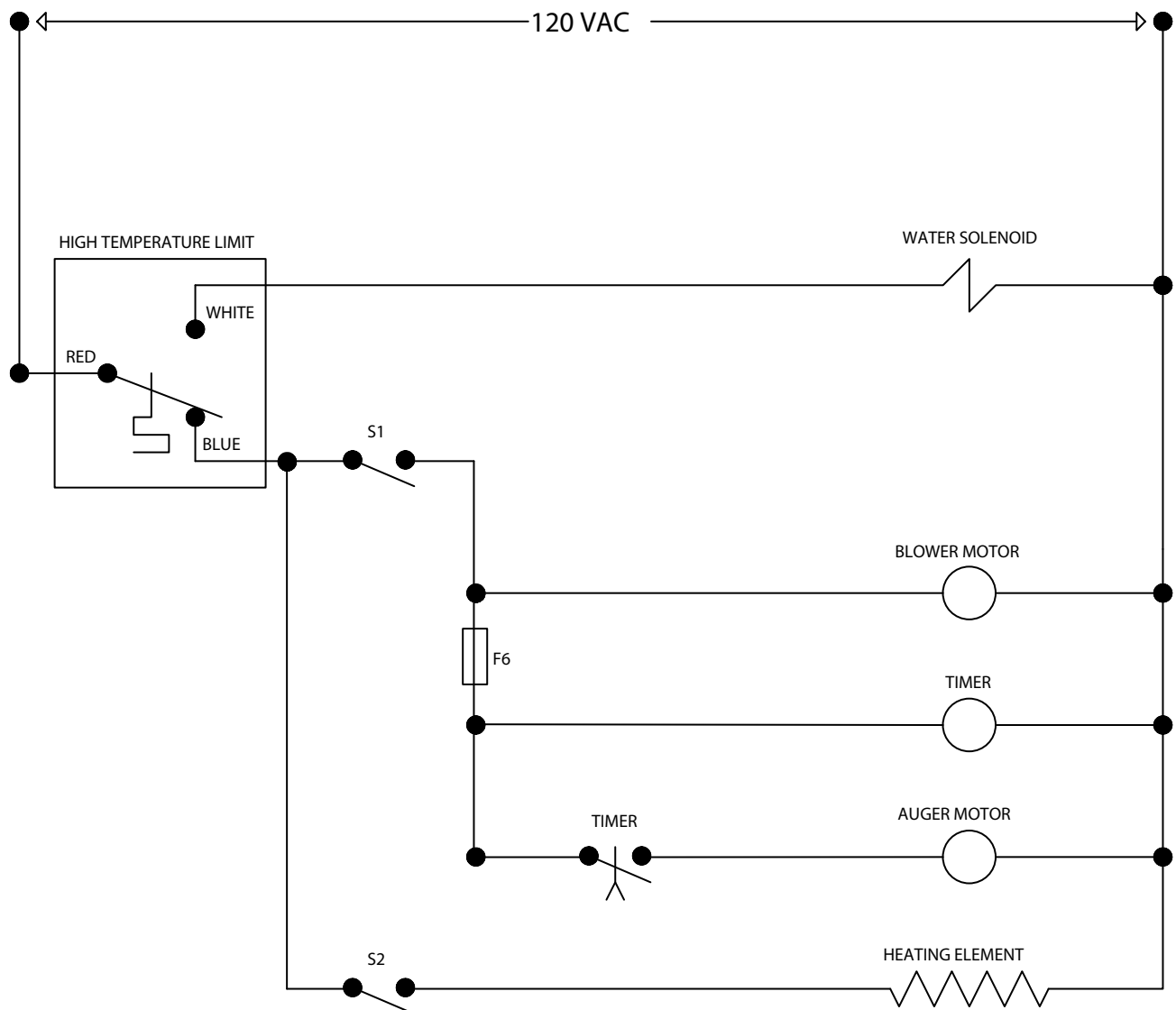


JUNCTION BOX ON SIDE OF PRODUCER

Standard Smoke Producer Control

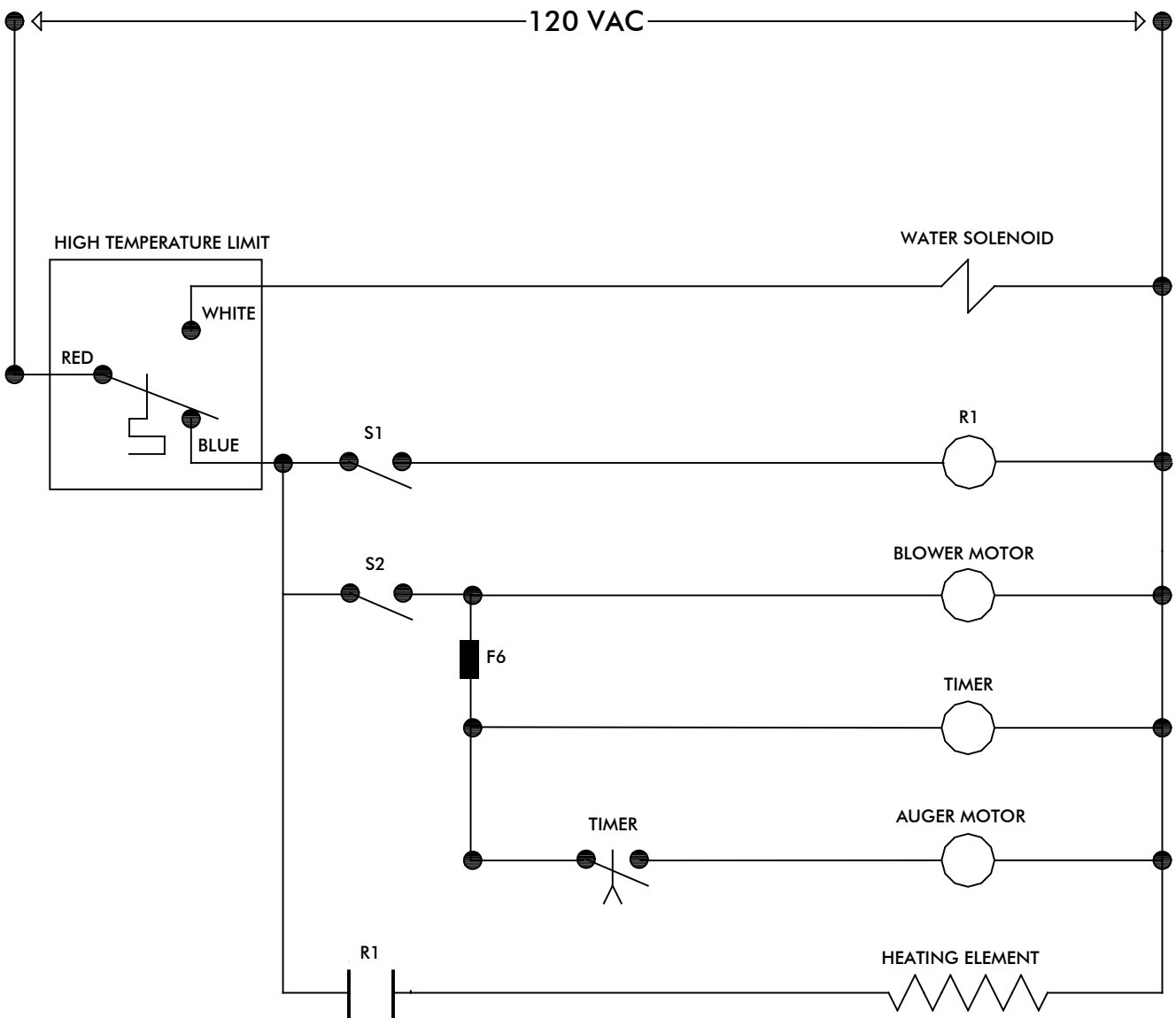
SMOKE PRODUCER FOR GRAND PRIZE 3 WITH STANDARD CONTROL

ITEM	P/N	DESCRIPTION
F6	800152	FUSE, 7A



Standard Smoke Producer Control

(Grand Prize™ II with Blower Only)



ITEM	P/N	DESCRIPTION
F6	800152	FUSE, 7A

PARTS

Recommended Spare Parts

Qty.	Part #	Description
1 ea	320077	Heating Element
1 ea	350212	DAYTON Gear Motor
1 ea	351062	LEESON Gear Motor
1 ea	351063	ORIENTAL Gear Motor
1 ea	350533	Timer

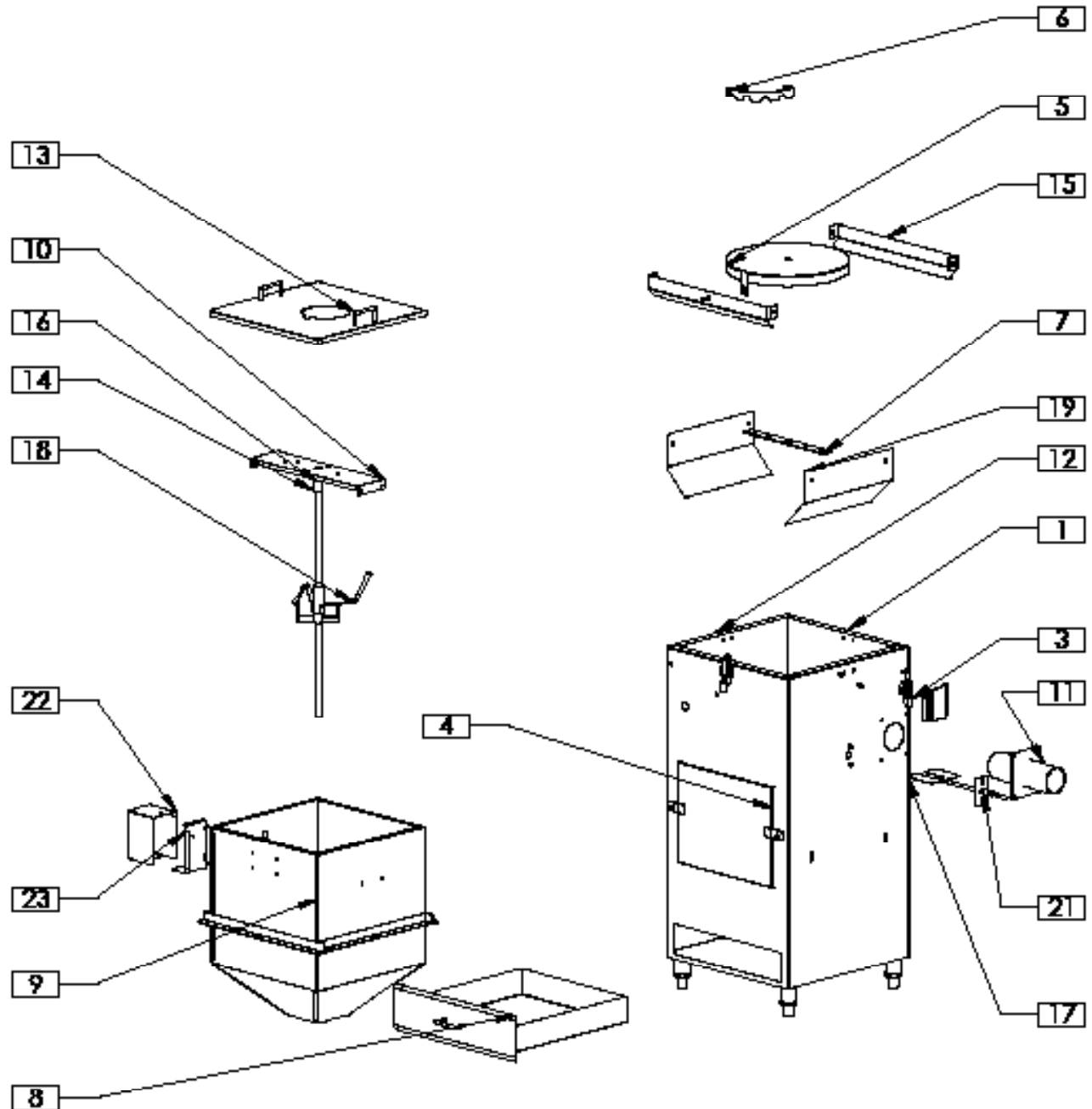
Smoke Producer

Controls

Item No.	Part #	Description
	320074	Smoke Producer, Standard Control
	320076	Smoke Producer, Microprocessor Control
	320081	Smoke Producer, W/ Blower (Grand Prize™ II Only)

PARTS**Spare Parts Diagram**

Item #: 320075

GP3 SMOKE PRODUCER SHELL

PARTS

Item #: 320075

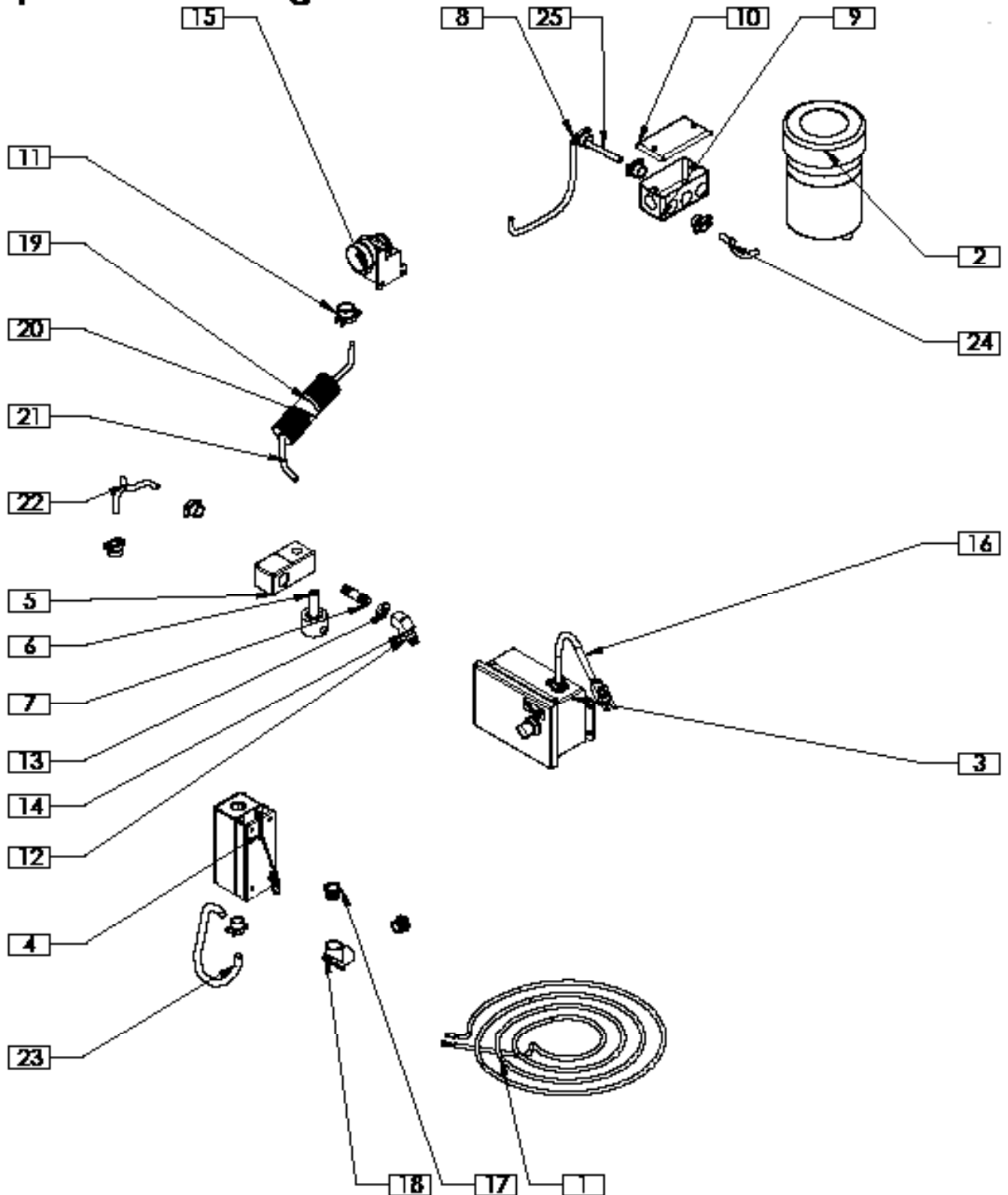
Spare Parts Diagram

GP3 SMOKE PRODUCER SHELL

ITEM NO.	PART NUMBER	REV	DESCRIPTION	QTY.
1	320075-001	B	WELDMENT, MAIN CABINET	1
2	320050-028	B	COUPLING, AIR BLOWING PIPE	1
3	320050-029	B	LATCH	4
4	320050-021	C	WELDMENT, SIDE DOOR, MAIN CABINET	1
5	320075-026	H	WELDMENT, BURNER PLATE, 13" DIA	1
6	320075-006	C	WELDMENT, SCRAPER BLADE (ONE BLADE DESIGN)	1
7	320075-030	B	BRACKET, HEATING ELEMENT	1
8	320050-025	C	WELDMENT, ASH TRAY	1
9	320075-010	E	WELDMENT, HOPPER CABINET	1
10	320058	D	MOTOR SUPPORT, HOPPER	1
11	320078	B	WELDMENT, SMOKE BLOWING PIPE	1
12	800661	D	SAFETY, QUICK	2
13	320050-019	D	TOP COVER, HOPPER, FOR DAYTON OR LEESON MOTORS	1
13	320075-021		TOP COVER, HOPPER, FOR ORIENTAL MOTOR	1
14	320063		SMOKE PRODUCER MOTOR COUPLING	2
15	320075-032	D	WELDMENT, SUPPORT BRACKET, BURNER PLATE	1
16	320075-009	A	AUGER	1
17	320075-034	A	WELDMENT, SLIDE, #2	1
18	320075-020	B	WELDMENT, AGITATOR	2
19	320075-031	B	ASH GUIDE	1
20	800383	B	PLATE BLOWER HOLE	1
21	320075-050	C	WELDMENT, SLIDE STOP	1
22	320140	D	WELDMENT, TIMER COVER	1
23	320141		TIMER MOUNT	1

PARTS**Spare Parts Diagram**

Item #: 320074

GP3 SMOKE PRODUCER-MODIFIED, 120V, MICRO

PARTS Spare Parts Diagram

Item #: 320074
GP3 SMOKE PRODUCER-MODIFIED, 120V, MICRO

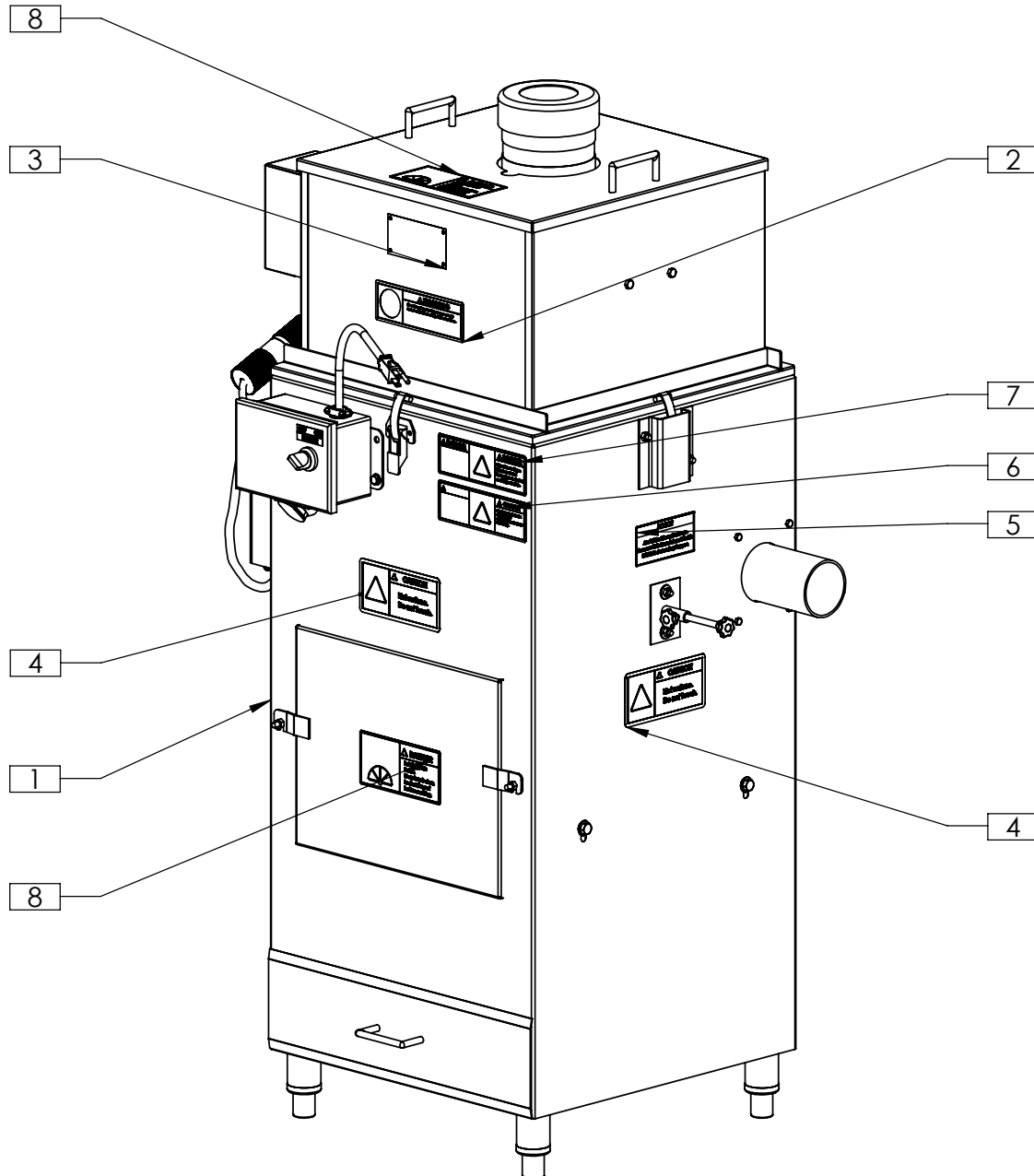
ITEM NO.	PART NUMBER	REV	DESCRIPTION	QTY.
1	320077	C	HEATING ELEMENT	1
2	351063	A	ORIENTAL GEAR MOTOR F/SMOKER ALSO REQUIRES 351064 GEARBOX	1
2	350512		DAYTON GEAR MOTOR F/SMOKER	1
2	351062		LEESON GEAR MOTOR F/SMOKER	1
3	800387	A	ELEC ENCL ASSY, NEW STD SMK PRODR	1
4	350797	A	HI-TEMP LIMIT	1
5	800028	A	HUMIDITY/SHOWER SOLENOID COIL	1
6	800134	A	SOLENOID VALVE, 2 WAY, NC 1/4IN BRASS	1
7	800148	A	PIPING, 1/4" NPT, NIPPLE 2" BRASS	1
8	800607	A	CONDUIT FITTING, 1/2 SCREW IN CONNECTOR	6
9	800065	A	GP3 ENCLOSURE F/LIMIT SWITCH	1
10	800066	A	ENCLOSURE COVER	1
11	800606		CONDUIT FITTING, 3/4 SCREW IN CONNECTOR	1
12	350125	A	NOZZLE F/INDUCT CLEAN 1/4IN, BRASS	1
13	800142	A	FLANGE NUT, 1/8	1
14	800146	A	ELBOW 45 DEG 1/4 NPT, BRASS	1
15	350517	A	TIMER MINUTE	1
16	860375	A	CABLE CORDSET 110V	1
17	800605	A	CONDUIT FITTING, 1/2 NPT FITTING NIPPLE	2
18	800144	A	90 DEG ELBOW (WIRE ACCESS)	1
19	880138	A	MALE PLUG 110V	1
20	880142	A	FEMALE PLUG 110V	1
21	800050-004	A	CABLE 14GA/3 WIRE	1
22	800050-005	A	CABLE 14GA/3 WIRE	1
23	860355-001	A	CABLE 14GA/5 WIRE	1
24	800050-001	A	CABLE 14GA/3 WIRE	1
25	800050-002	A	CABLE 14GA/3 WIRE	1

PARTS

Spare Parts Diagram

Item #: 320074

GP3 SMOKE PRODUCER-MODIFIED, 120V, MICRO



PARTS

Item #: 320074

Spare Parts Diagram

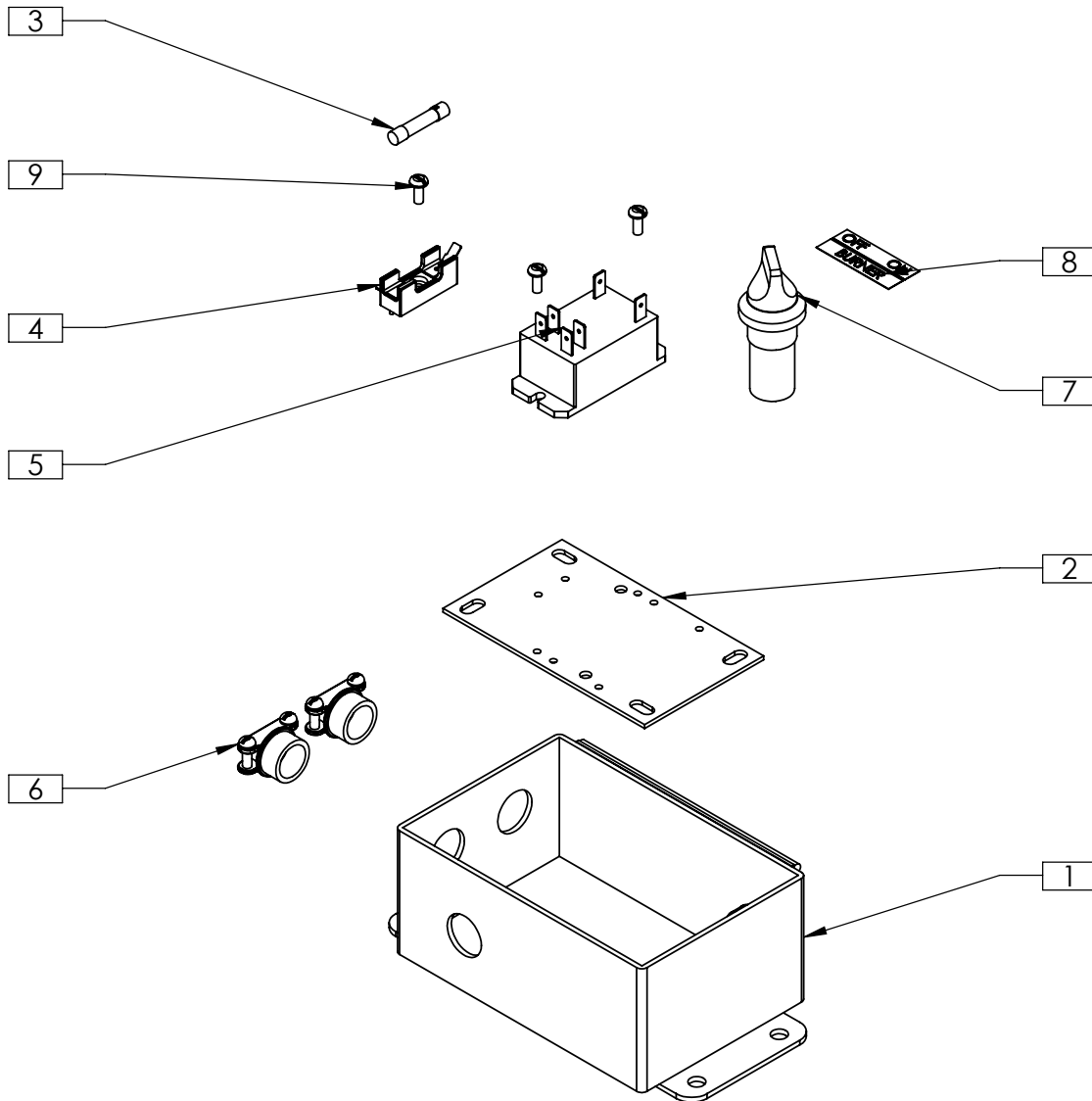
GP3 SMOKE PRODUCER-MODIFIED, 120V, MICRO

ITEM NO.	PART NUMBER	REV	DESCRIPTION	QTY.
1	320075	M	GP3 SMOKE PRODUCER SHELL	1
2	860988	A	DECAL, WARNING: READ OWNER'S MANUAL	1
3	283999	A	ID PLATE (GENERAL)	1
4	889599	A	DECAL, HOT SURFACE	3
5	800372	A	DECAL, REMOVE SLIDE PRIOR TO HOPPER	1
6	800663	A	DECAL, 2 PWR SUPPLIES	1
7	889235	A	DECAL, DISCONNECT B4 SERVICING	1
8	800231	A	DECAL, SMOKEPRODUCER ROTATING PARTS	2

PARTS**Spare Parts Diagram**

Item #: 800387

ELEC ENCL ASSY, NEW STD SMK PRODR



PARTS

Item #: 800387

Spare Parts Diagram

ELEC ENCL ASSY, NEW STD SMK PRODR

ITEM NO.	PART NUMBER	REV	DESCRIPTION	QTY.
1	800386	A	MODIFIED ENCL, F/NEW STD	1
2	800241	C	GP3 ENCLOSURE PANEL	1
3	800152	A	FUSE, MDL-7, 7AMP, 250V, 1/4X1-1/4	1
4	800157	A	FUSE BLOCK, 6X32 QCI GOULD SHAWMUT	1
5	800156	A	RELAY	1
6	800607	A	CONDUIT FITTING, 1/2 SCREW IN CONNECTOR	3
7	860316	A	SWITCH, POWER ON/OFF & BODY ASSY	1
8		A	DECAL, ELECTRICAL BOX	1
9	866714	A	PAN HEAD SCREW, M4x10	3



800.777.5624

UltraSource LLC

1414 West 29th Street

Kansas City, MO 64108 USA

Phone 816.753.2150 • Fax 816.753.4976

info@UltraSourceUSA.com • UltraSourceUSA.com

**UltraSource Technical Service
&
Replacement Parts**

Toll-Free 800.777.5624

Parts Fax 816.561.2854

Service Fax 816.753.4976

**EQUIPMENT AND SUPPLIES
FOR THE MEAT AND FOOD INDUSTRY**