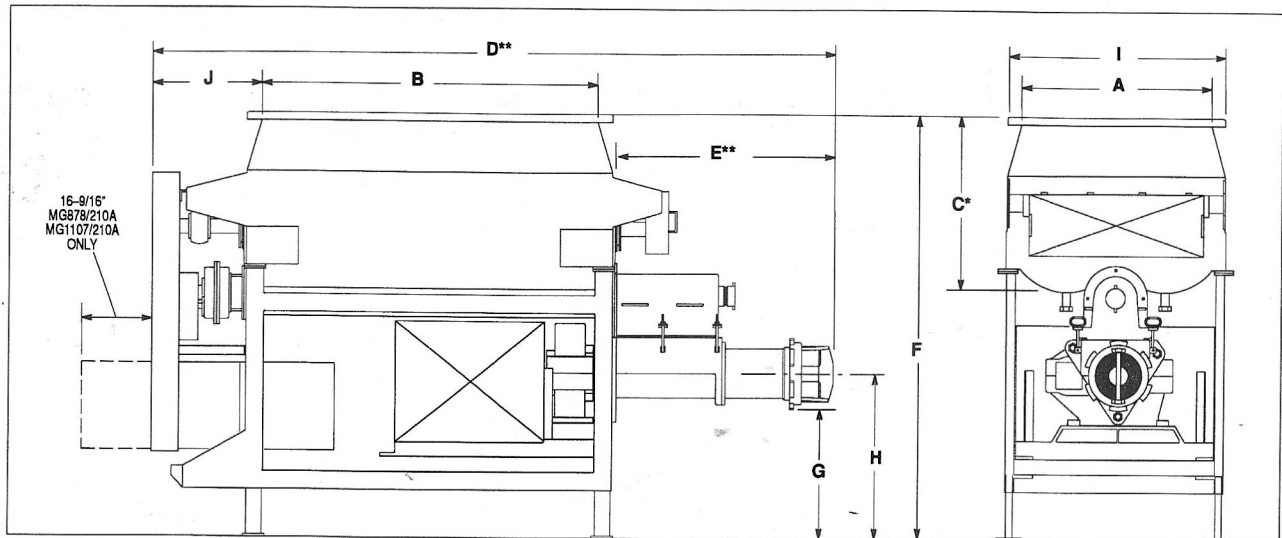


OVERALL DIMENSIONS AND CAPACITIES WEILER® MIXER-GRINDERS



STANDARD MODELS**	TUB INTERIOR			EXTERIOR DIMENSIONS						
	A	B	C*	D**	E**	F	G	H	I	J
MG878/210A	37-1/8" (943mm)	53-1/8" (1349mm)	37-5/8" (956mm)	128-3/4" (3270mm)	46-1/2" (1181mm)	90-1/8" (2289mm)	29-3/16" (741mm)	36" (914mm)	44-3/8" (1127mm)	25-1/2" (648mm)
MG1107/210A	37-1/8" (943mm)	53-1/8" (1349mm)	37-5/8" (956mm)	134-1/4" (3410mm)	51-3/4" (1314mm)	90-1/8" (2289mm)	28" (711mm)	36" (914mm)	44-3/8" (1127mm)	25-1/2" (648mm)
MG1109/360A	42-5/8" (1082mm)	77-1/8" (1959mm)	39-1/8" (994mm)	157" (3988mm)	50-1/2" (1283mm)	94-15/16" (2411mm)	29-3/16" (741mm)	37-1/16" (941mm)	49-7/8" (1267mm)	25-7/16" (646mm)

STANDARD MODELS**	GRINDER PLATE DIAMETER	CUBIC FEET CAPACITY (TUB)	STANDARD MOTOR SIZE IN HORSEPOWER (KW)		
			MIXER	UNLOAD SCREW	GRINDER
MG878/210A	8-5/8" (219mm)	33 (934 liters)	7-1/2 (5.6 KW)	5 (3.7 KW)	40 (29.8 KW)
MG1107/210A	11" (280mm)	33 (934 liters)	7-1/2 (5.6 KW)	5 (3.7 KW)	40 (29.8 KW)
MG1109/360A	11" (280mm)	59 (1670 liters)	10 (7.5 KW)	5 (3.7 KW)	50 (37.3 KW)

- * For certified dimensions consult Weiler® and Company, Inc.
- * Bottom inside of tub.
- ** Depends on ring style (non-bridged, single-bridged).

NOTES:

ACTUAL BATCH WEIGHT CAPACITIES MAY VARY, DEPENDING UPON THE TEMPERATURE AND VISCOSITY OF THE PRODUCT BECAUSE LEVEL LOADING CANNOT BE MAINTAINED UNDER MOST CONDITIONS.

CUBIC FEET CAPACITY represents rated volume, level to top of paddles (13" 33cm) from top rim of tub).

To determine tub holding capacities, multiply the product weight in POUNDS PER CUBIC FOOT times the CUBIC FEET CAPACITY.

EXAMPLE: Product weight 45 pounds per cubic foot. Cubic feet capacity is 59. Tub holding capacity is then 45 x 59 = 2,655 pounds, level to top of the mixing paddles.

GRINDING RATE is based on 1/2" pre-grind meat at 32° F, using 1/8" orifice plate.

ELECTRICAL: Uses standard 230/460V, 60Hz, 1725 RPM motors. Includes mixer and unload screw reversing timed starters and grinder starter. Pushbutton control (START / STOP) furnished. Motors and control for other electrical specifications available at extra cost.