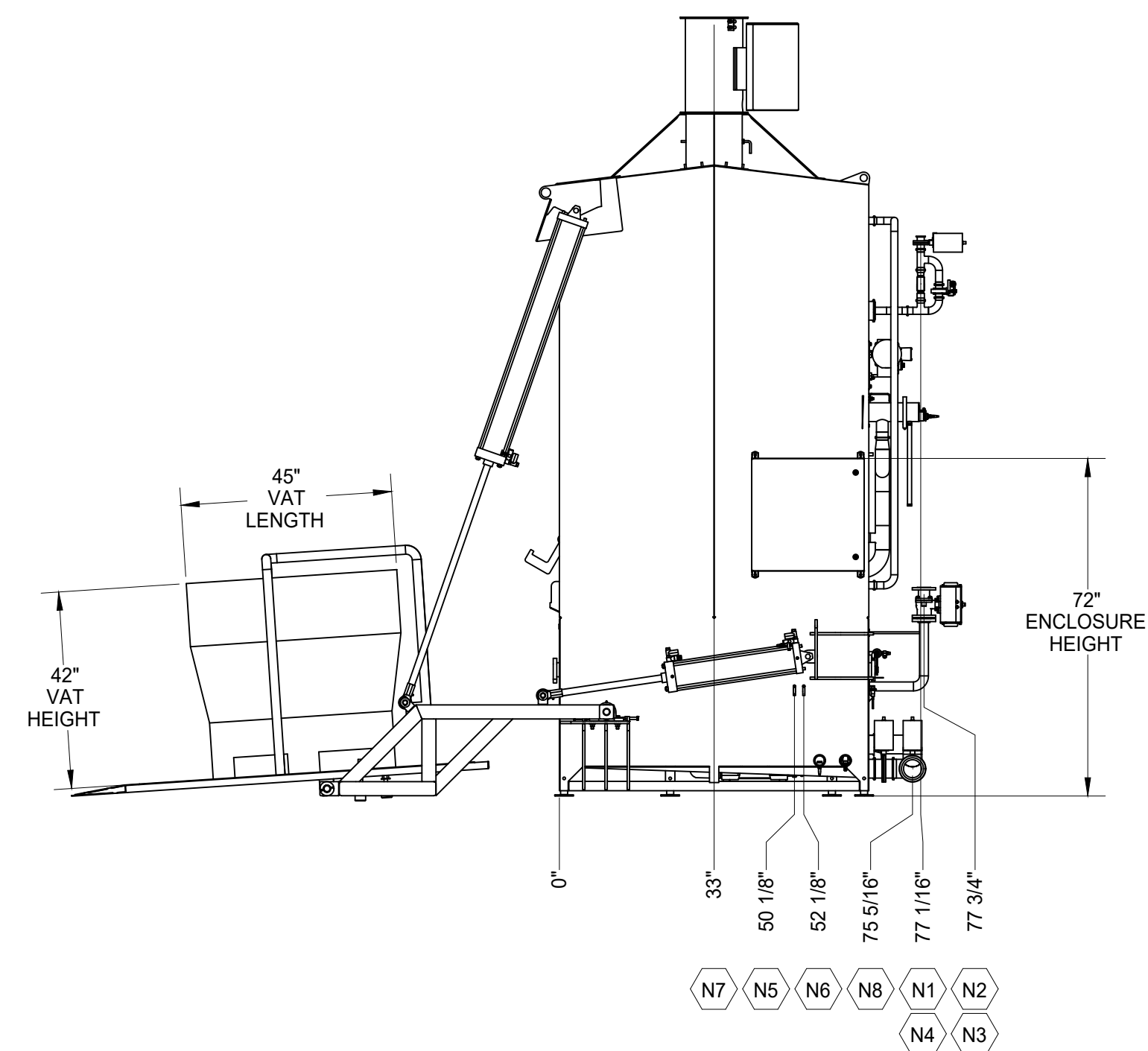
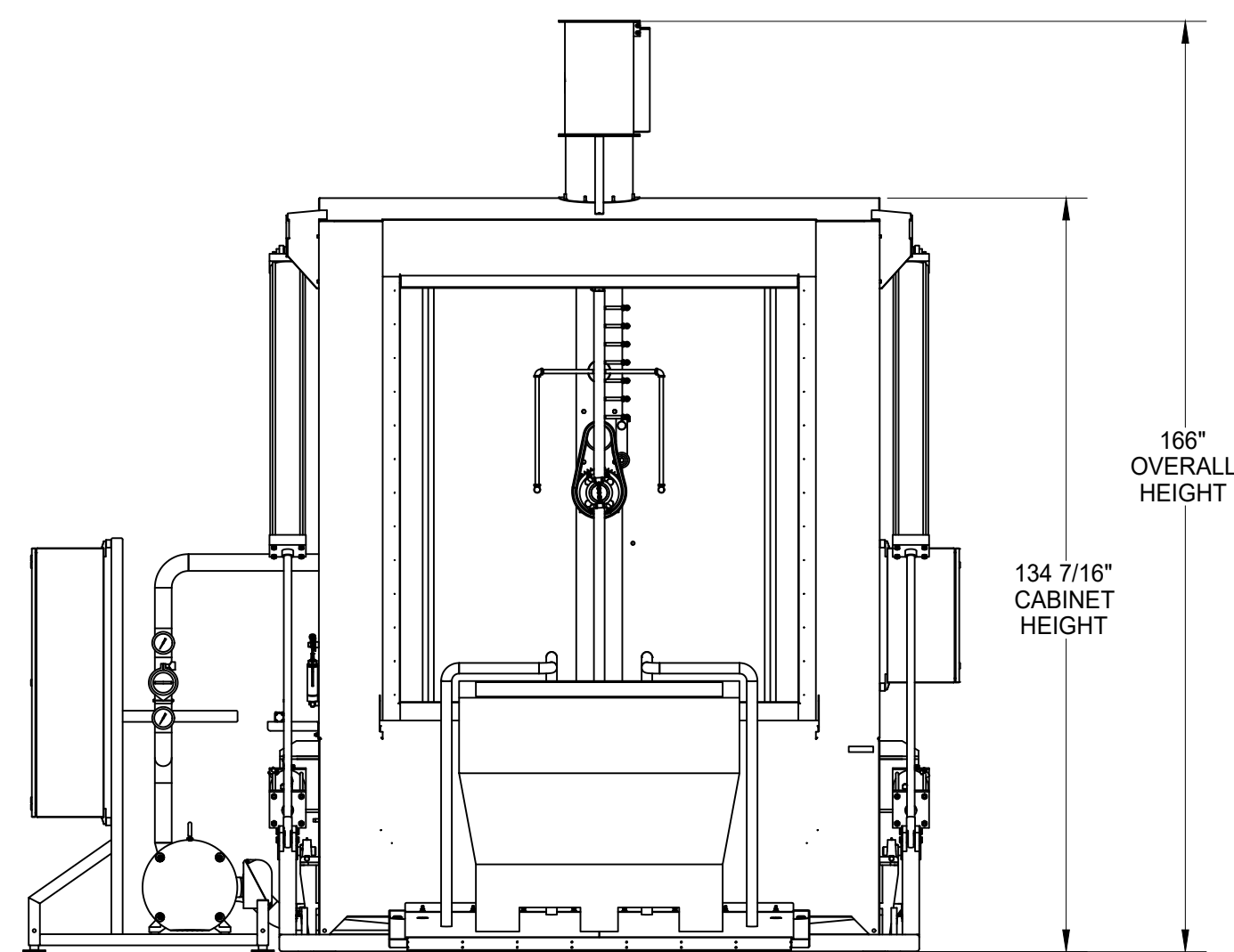
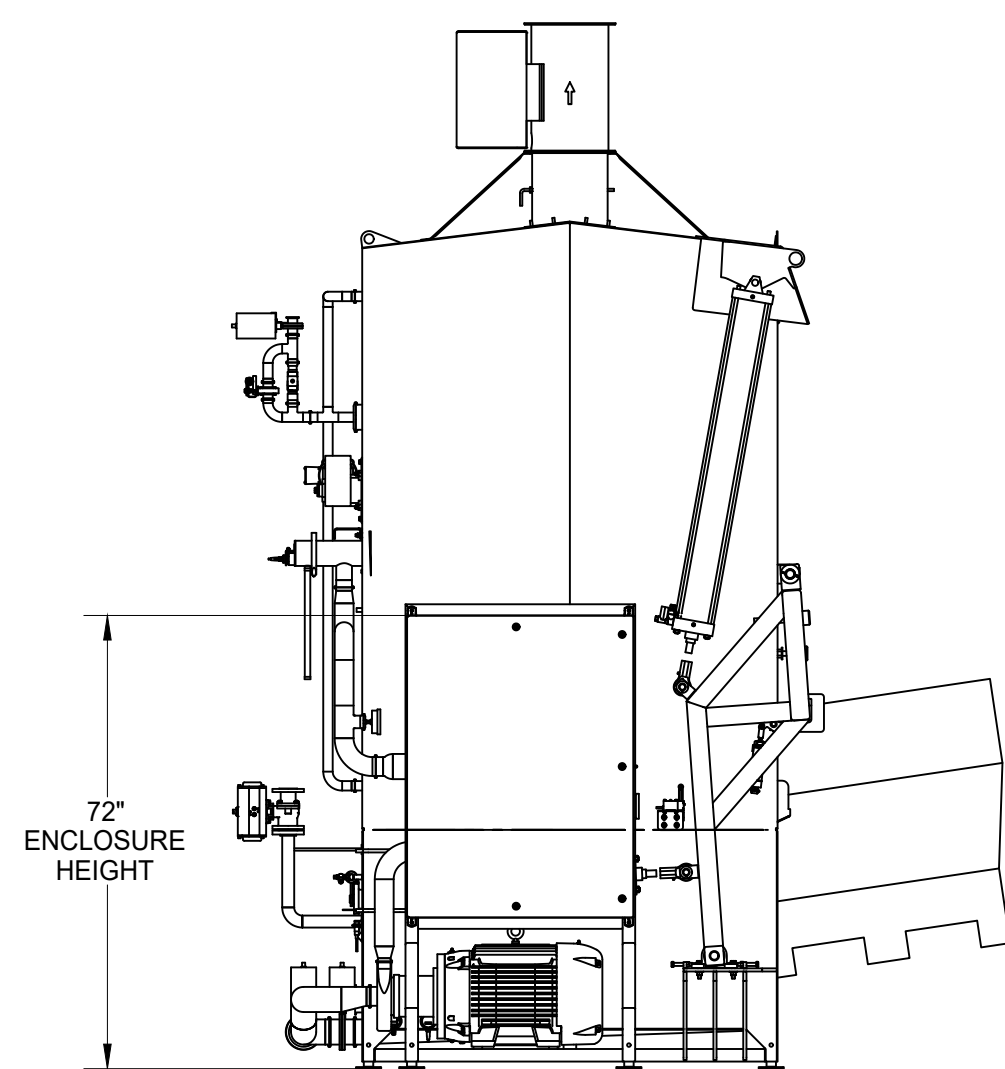
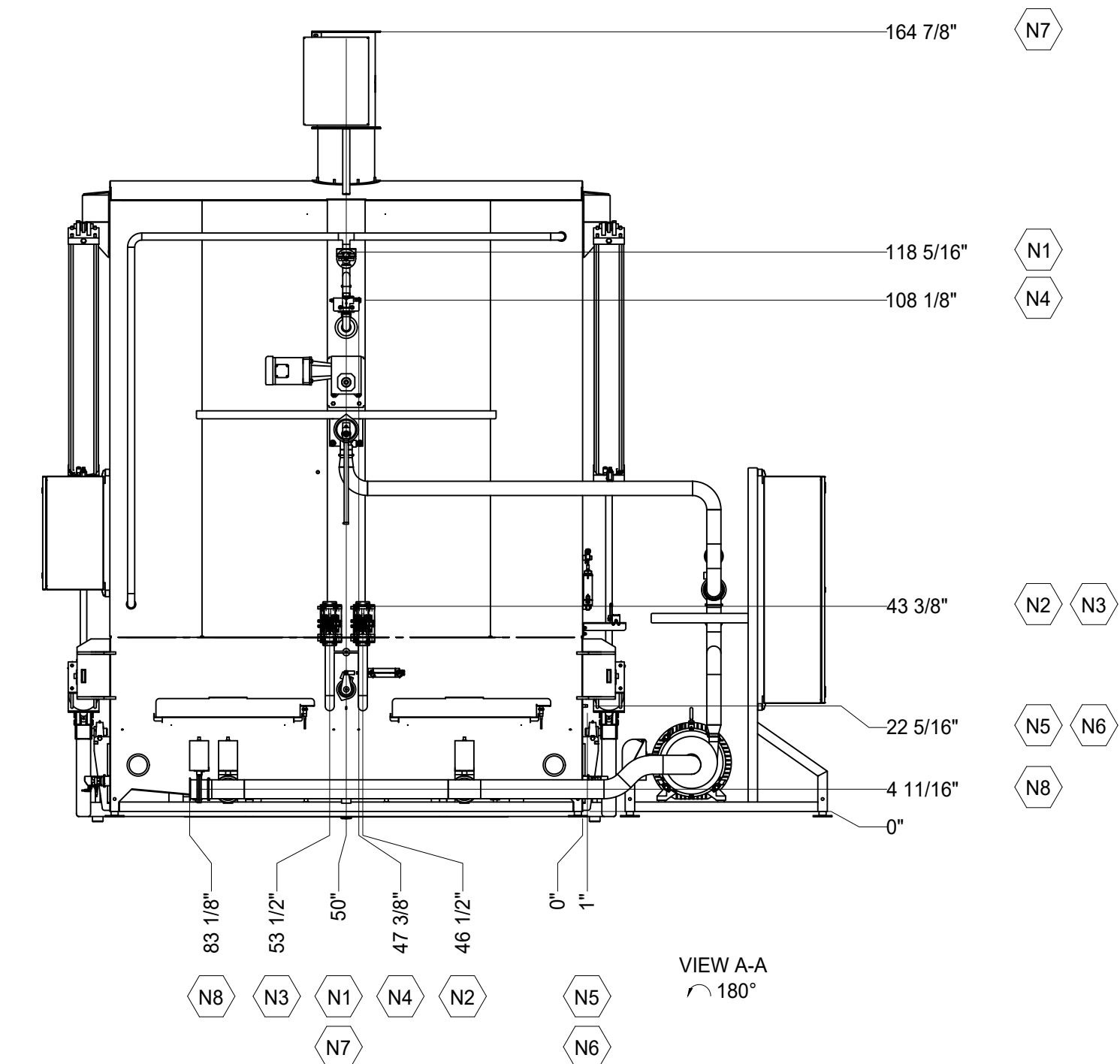
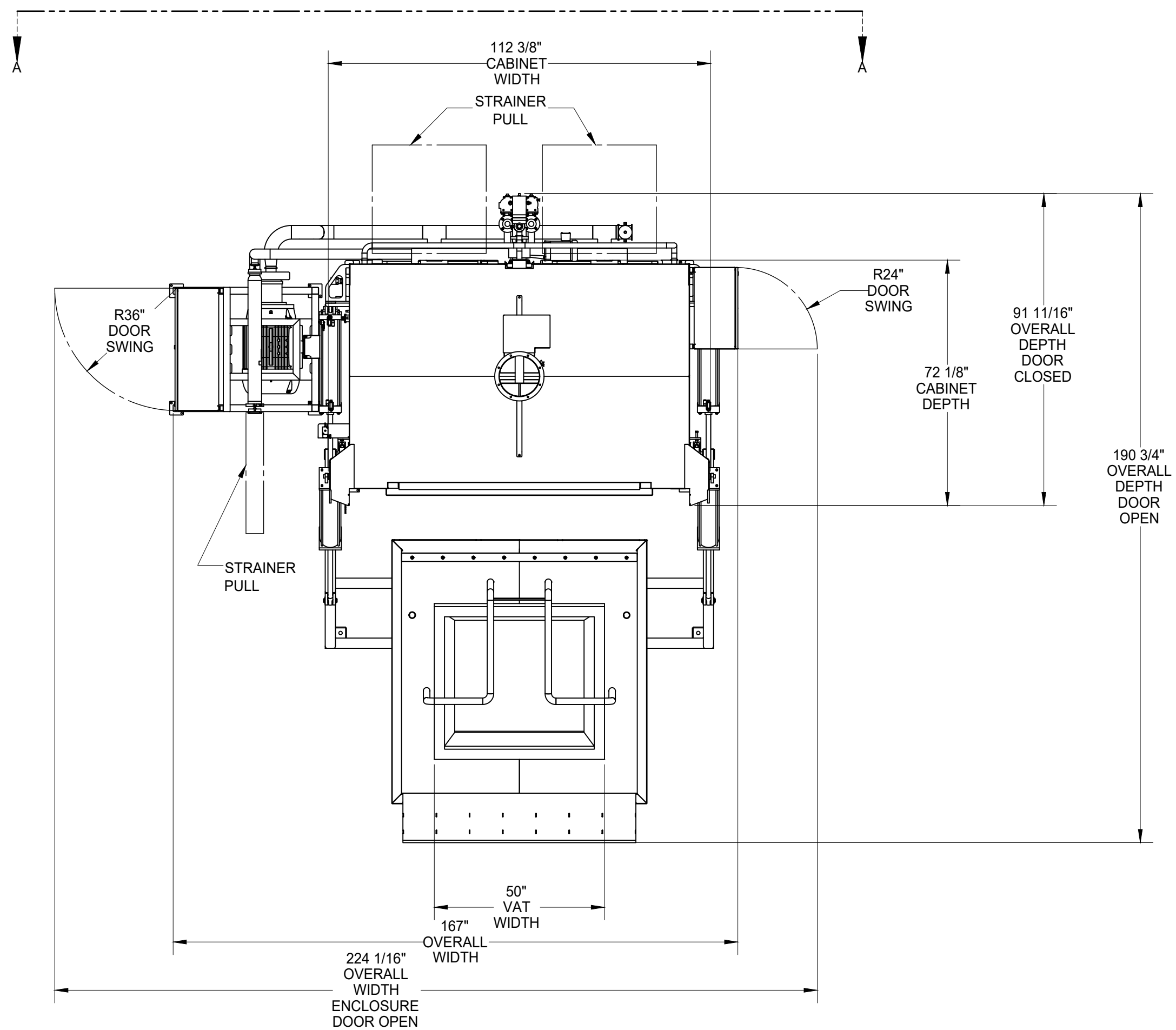


SKID CONNECTION SCHEDULE				
ID	SERVICE	SIZE	TYPE	MATERIAL
N1	RINSE WATER SUPPLY	1.50"	TRI-CLAMP	304 SS
N2	HOT WATER SUPPLY - TK-100	1.50"	150 # FLANGE	304 SS
N3	HOT WATER SUPPLY - TK-200	1.50"	150 # FLANGE	304 SS
N4	CHEMICAL SUPPLY - SANITIZER	0.50"	HOSE BARB	BRASS
N5	CHEMICAL SUPPLY - CAUSTIC	0.25"	MALE NPT	316L SS
N6	CHEMICAL SUPPLY - ACID	0.25"	MALE NPT	316L SS
N7	EXHAUST	12.0"	FLANGE	304 SS
N8	DRAIN	4.00"	TRI-CLAMP	304 SS

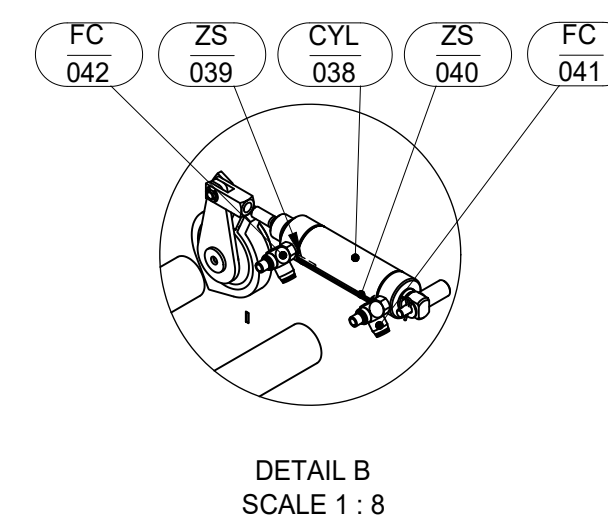
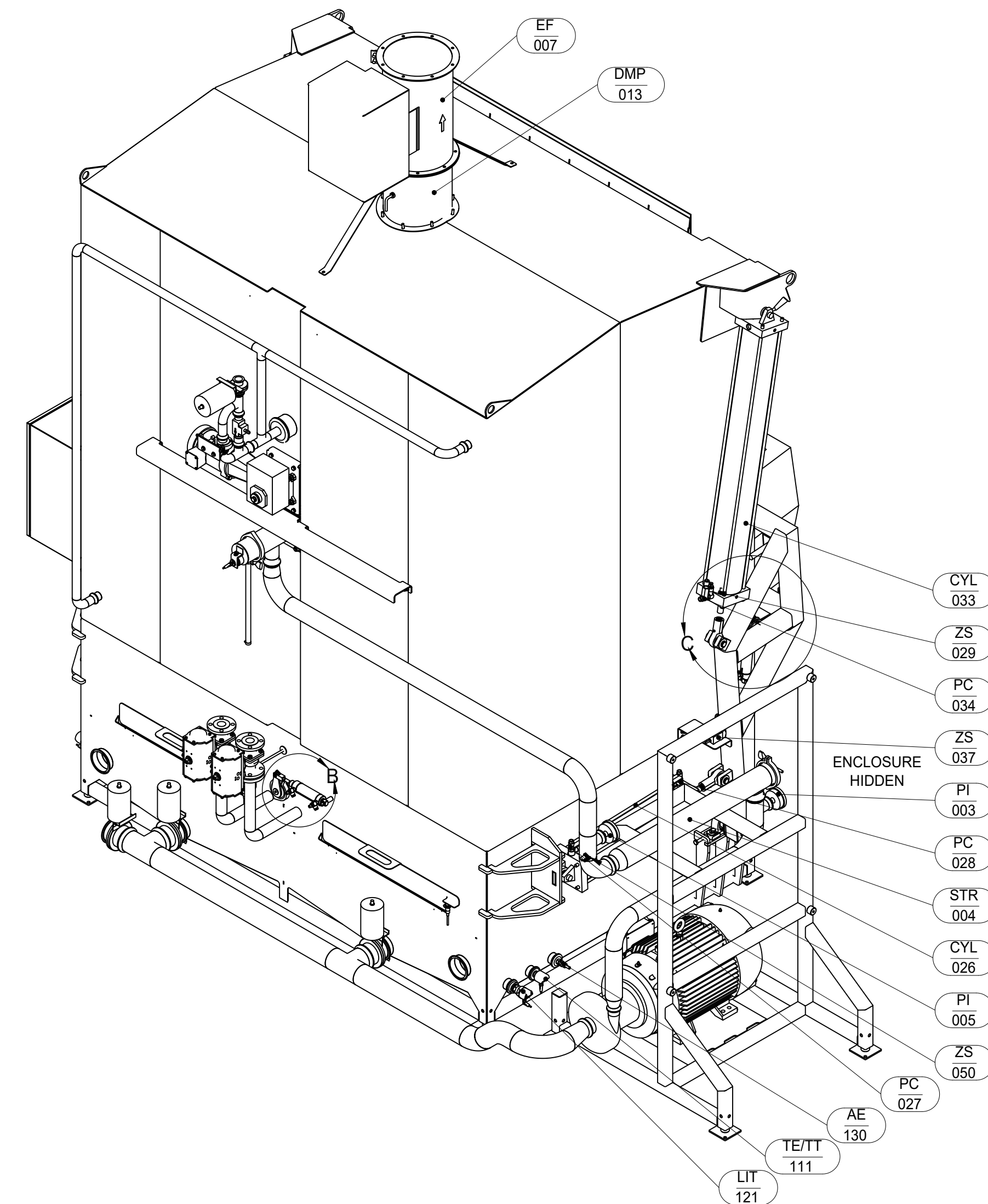
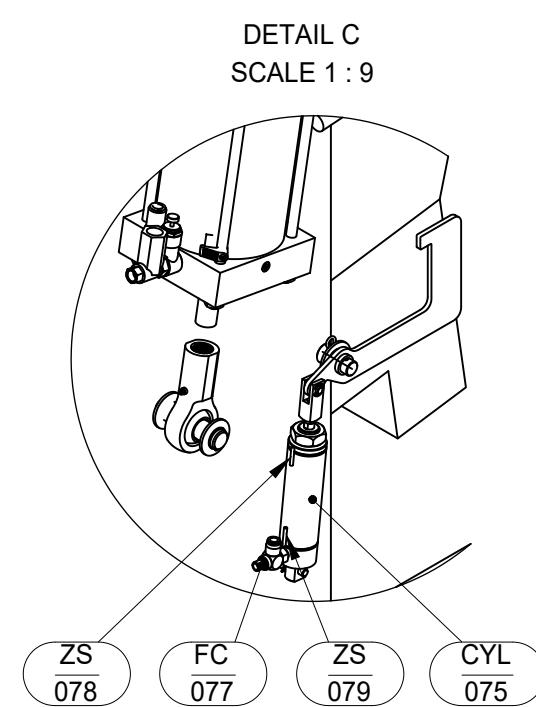
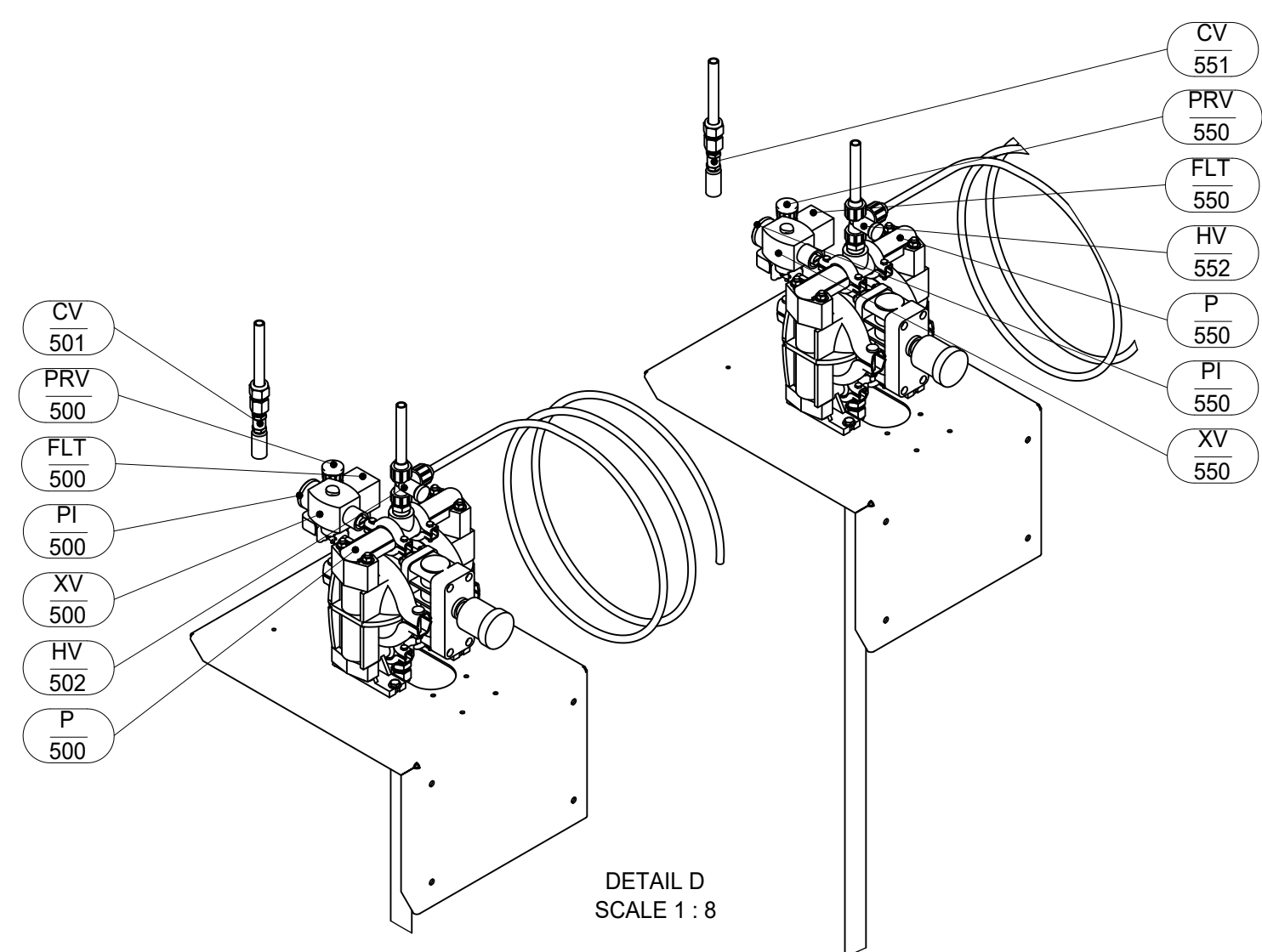
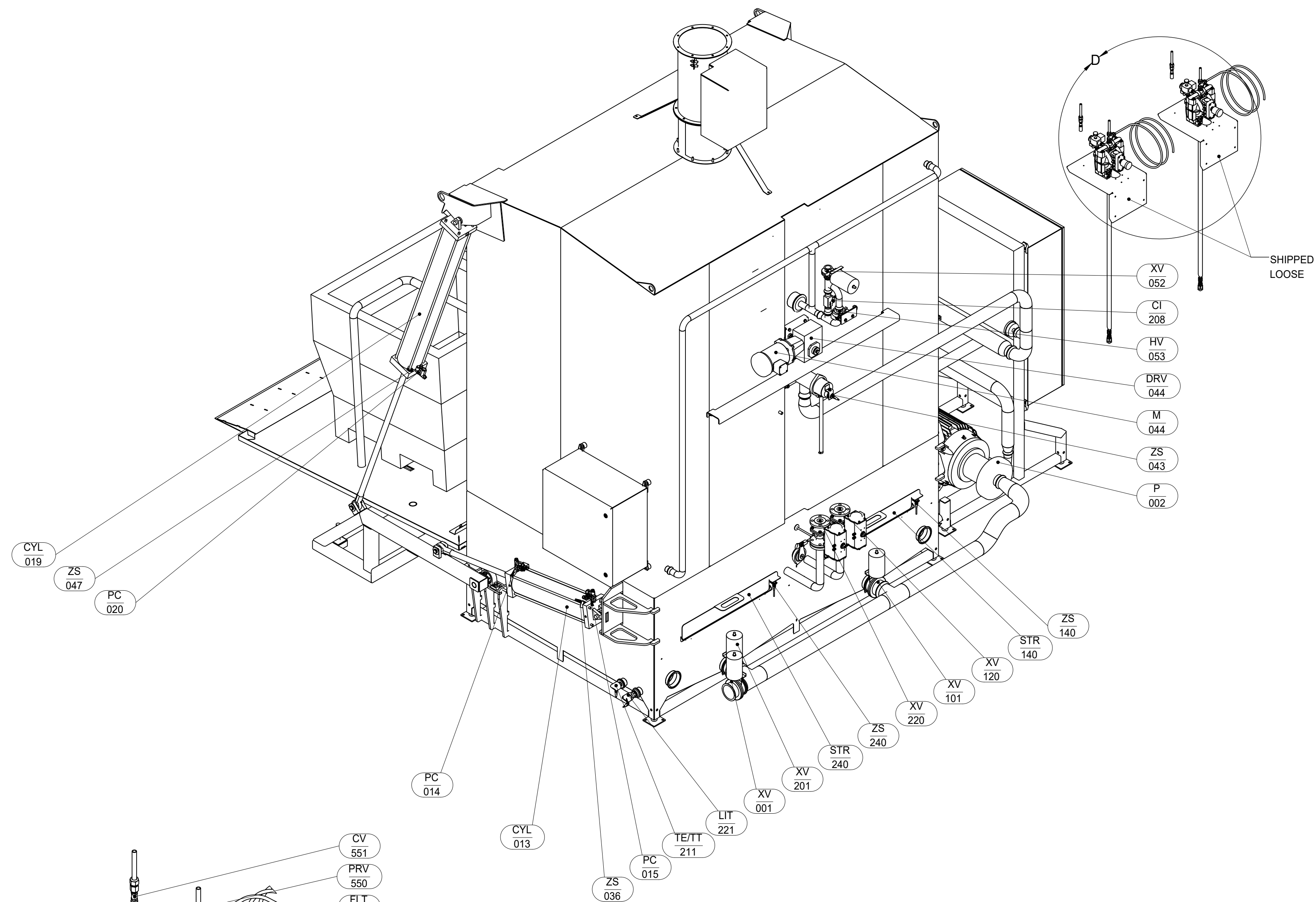


NOTES:

- REFERENCE SMI DRAWINGS & DOCUMENTS:
- 847831 FOR P&ID
- 847831 EXCEL SPREADSHEET FOR MECHANICAL BILL OF MATERIAL
- ALL SANITARY TUBING WELDS ARE TO BE HAND WELDED. WELDS WILL BE PERFORMED IN AN INERT GAS BACKED ATMOSPHERE. ALL WELDS TO BE PER 3A STANDARDS.
- TRI-CLAMP GASKETS TO BE EPDM WITH SINGLE HINGE CLAMPS UNLESS OTHERWISE NOTED.
- FRAME IS CONSTRUCTED OF 304 SS BOX TUBING WITH BEAD BLAST FINISH.
- AIR LINES TO BE BLUE-COLORED POLYETHYLENE TUBING INSTALLED ON SKID FRAME & TERMINATED TO EACH SKID MOUNTED PNEUMATIC DEVICE.
- RIGID CONDUIT AND FITTINGS TO BE SCH 40 NON-METALLIC UL RATED PVC.
- FLEXIBLE CONDUIT TO BE NON-METALLIC UL RATED PVC WITH NYLON FITTINGS.
- APPROXIMATE WEIGHTS:
- EMPTY = 6,200 LBS
- FULL = 9,400 LBS

W.O. _____	This drawing and the information it contains is the property of Sani-Matic, Inc. This drawing is loaned strictly on the condition that it will not be used, reproduced, or copied in any manner. It is to be returned to the originator immediately on demand and that it will be used solely in connection with work being performed for, or specifically authorized in writing by Sani-Matic, Inc.	SANI-MATIC, INC. (p)800-356-3300 · sanimatic.com	12252401
NO. REQD. _____			GENERAL ASSEMBLY, VAT WASHER, SINGLE
<small>DO NOT SCALE DRAWING. ALL DIMENSIONS ARE IN INCHES. SPECIFIED TOLERANCES UNLESS OTHERWISE NOTED.</small>		<small>1 PLACE DECIMAL ± .031</small> <small>2 PLACE DECIMAL ± .015</small> <small>3 PLACE DECIMAL ± .005</small> <small>ANGULAR ± .005</small> <small>REBURR ALL SHARP EDGES</small>	<small>DR. BY: ABF</small> <small>DATE: 18-AUG-2022</small> <small>SCALE: 1:30</small>

B	AS BUILT	02-MAR-2023	ABF		
A	RELEASED FOR APPROVAL	26-AUG-2022	ABF		
REV	DESCRIPTION	DATE	BY		



W.O. _____	This drawing and the information it contains is the property of Sani-Matic, Inc. This drawing is loaned strictly on the condition that it will not be used, produced, or copied in any manner, that will be returned to the donor immediately on demand and that it will be used solely in connection with work being performed for, or specifically authorized in writing by Sani-Matic, Inc.	SANI-MATIC, INC. GENERAL ASSEMBLY, VAT WASHER, SINGLE	12252401	DR. BY: ABF	DATE: 18-AUG-2022	DWG. NO. _____	REV B
NO. REQD. _____	DO NOT SCALE DRAWING. ALL DIMENSIONS ARE IN INCHES SPECIFIED: FRACTIONAL ± 1/16 1 PLACE DECIMAL ± 0.03 2 PLACE DECIMAL ± 0.015 3 PLACE DECIMAL ± 0.005 ANGULAR ± 1° REBURR ALL SHARP EDGES.	GENERAL ASSEMBLY, VAT WASHER, SINGLE	12252401	DR. BY: ABF	DATE: 18-AUG-2022	DWG. NO. _____	REV B
				PROT. ENG. _____	SCALE: 1:18		Page 2 of 2